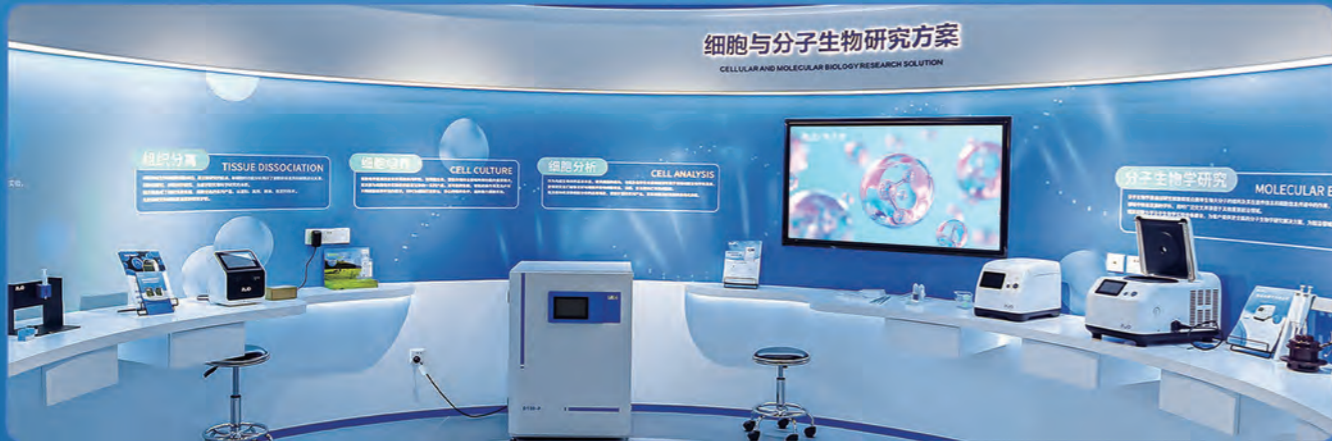


Reagents & Consumables Catalog



Market experience

23 years

Countries and regions

100+

Customers worldwide

40000+

Product
Portfolio
1000+

11000+
Patents

15000+
R&D

18000+
Service

2500+
Agents

RWD Life Science Co., Ltd.

Add: 9, 19-20/F, Building 7A, 9F Building 7D, Shenzhen International Innovation Valley, Dashi 1st Road, Nanshan District, Shenzhen, Guangdong, China





RWD Life Science Co., Ltd.

Established in 2002 and headquartered in Shenzhen, with a branch in the USA, RWD Life Science is a China's national high-tech enterprise specializing in the life science, animal health, and clinical medical fields. The company employs over 900 staff members, with R&D personnel accounting for approximately 25% of the workforce. Each year, around 15% of annual revenue is invested in research and development, resulting in the acquisition of more than 100 invention patents. We commit to contributing wisdom and strength to enhancing life quality, building an enabling platform that integrates research, education, application, and industrialization. Through sustained investment in R&D innovation, we have established seven core solutions: animal surgery and modeling, animal neural signal research, microcirculation detection and in vivo imaging, cellular and molecular biology research, animal behavioral research, animal diagnostics and treatment, and histopathological sectioning protocol. These integrated systems meet specialized equipment requirements across diverse scientific fields. Currently, our products and services span over 100 countries and regions worldwide. We empower more than 1,000 research institutes, 2,500 hospitals, 6,000 universities, 15,000 veterinary clinics, and 18,000 biopharmaceutical companies. To date, RWD-enabled innovations have contributed to over 14,500 SCI-indexed publications, earning the trust of 40,000+ clients globally.

Vision

To become a world-leading enterprise in the life science industry by enhancing life quality through wisdom and strength.

Mission

We strive to successfully provide customers with reliable solutions and services in life science, animal health, and medical devices fields.

Core Values

Quality / Sincerity / Responsibility / Struggle

Quality Policy

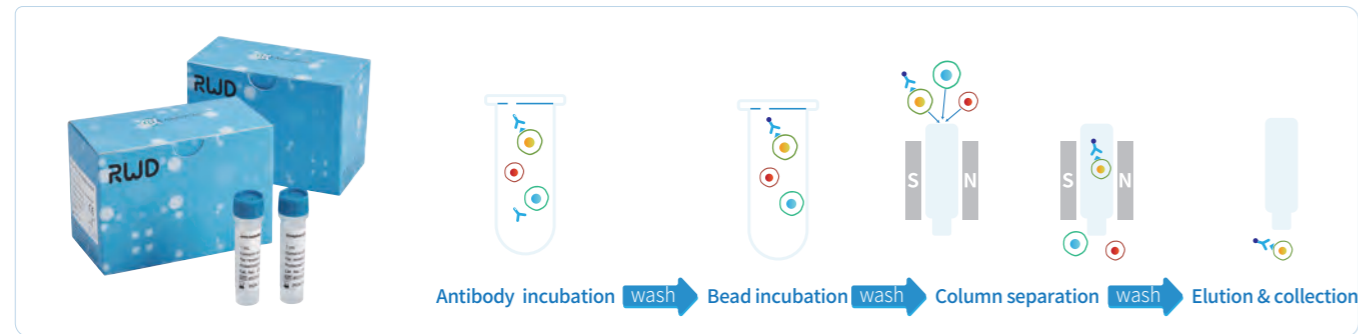
We stays customer centricity and makes concerted efforts to optimize products and solutions under scientific management.



Magnetic Cell Separation System	02-04	MCAO Sutures	20-20
Tissue Enzymatic Digestion Kit	05-06	Gas Filter Canister	21-21
Tissue Processing Tube	06-07	Isoflurane	21-21
Cell Counting Slide	08-08	Glass Capillary Tubes	21-21
Osmotic Pump	08-09	Surgical Instruments	22-35
Vascular Infusion and Sampling System for Small Animals	10-10	Histopathology Consumables	36-36
Ventilator System for Small Animals	11-11	Rodent Brain & Heart Matrices	36-36
Cranial Drill & Drill Bit	11-11	Stereotaxic Instrument Accessories	37-38
Illuminator	11-11		
Brain Microinjection Cannula	12-16		
Fiber-optic Cannulae	17-17		
Optical Fiber and Patchcord	18-19		

Magnetic Cell Separation System

RWD Magnetic Cell Separation System features proprietary magnetic bead-based kits and optimized magnetic stands that enable rapid isolation of target cells from heterogeneous samples within minutes, with minimal handling. The ultra-small, biodegradable nanobeads eliminate the need for elution and exert no stress on cells, preserving their native state. Isolated cells demonstrate high purity and viability, and are readily compatible with a wide range of downstream applications, including flow cytometry analysis and sorting, cell culture and activation, and single-cell sequencing.



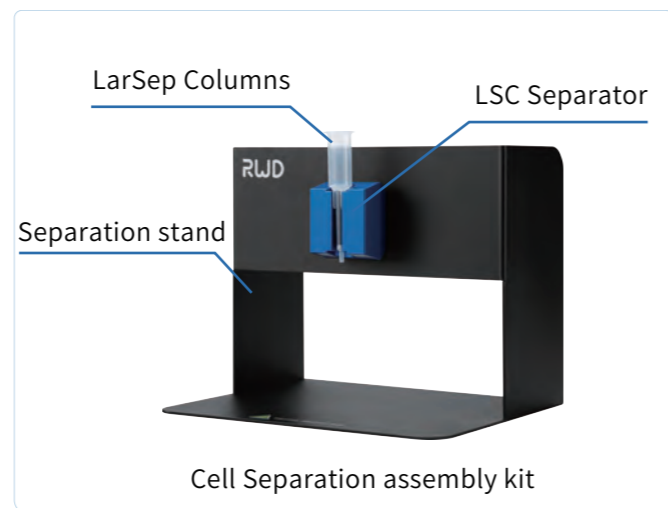
Magnetic Cell Separation System (Column Based)

Product Description

- The column-based cell separation system consists of a magnetic stand, magnets, separation columns, and reagent kits. The magnetic stand secures the magnets, which generate a stable and controllable magnetic field. Separation columns are filled with a high-affinity magnetic matrix, enabling efficient separation of target and non-target cells from suspensions based on magnetic labeling as they pass through the column.

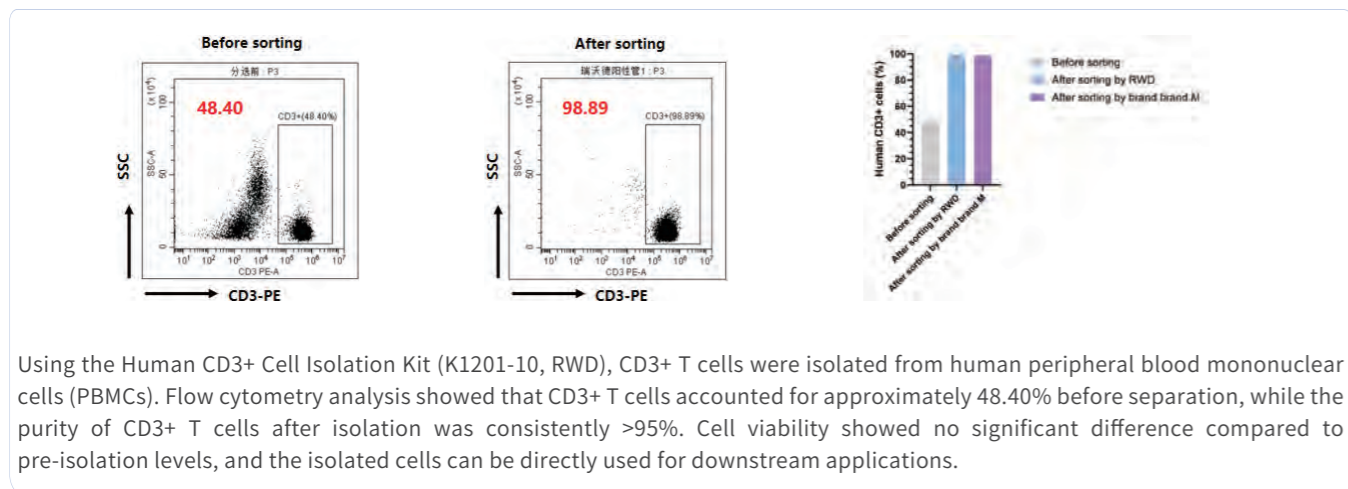
Product features

- High Purity and Recovery:** Low non-specific binding and minimal cell loss, making it ideal for applications requiring high purity.
- High Throughput Capacity:** Sample loading capacity can be increased by adding magnetic channels, enabling parallel processing of multiple samples.
- User-Friendly Operation:** Single-sample separation can be completed within 30 minutes, with a simple and easy-to-use workflow.



Data Showcase

Human CD3+ Cell Separation Kit-100T (Column Based, Positive)



Using the Human CD3+ Cell Isolation Kit (K1201-10, RWD), CD3+ T cells were isolated from human peripheral blood mononuclear cells (PBMCs). Flow cytometry analysis showed that CD3+ T cells accounted for approximately 48.40% before separation, while the purity of CD3+ T cells after isolation was consistently >95%. Cell viability showed no significant difference compared to pre-isolation levels, and the isolated cells can be directly used for downstream applications.

Order information-Column based

	Cat. No.	Product Name	Sorting mode	Kit Size
Column based Indirect Labeling	K1301-10	Mouse CD3+ Cell Separation Kit (100T)	Positive (Indirect Labeling)	for 1*10 ⁹ total cells
	K1302-10	Mouse CD4+ Cell Separation Kit (100T)	Positive (Indirect Labeling)	for 1*10 ⁹ total cells
	K1303-10	Mouse CD8+ Cell Separation Kit (100T)	Positive (Indirect Labeling)	for 1*10 ⁹ total cells
	K1304-10	Mouse CD45+ Cell Separation Kit (200T)	Positive (Indirect Labeling)	for 2*10 ⁹ total cells
	K1305-10	Mouse CD19+ Cell Separation Kit (200T)	Positive (Indirect Labeling)	for 2*10 ⁹ total cells
	K1306-10	Mouse CD11b+ (Microglia) cell separation Kit (100T)	Positive (Indirect Labeling)	for 1*10 ⁹ total cells
	K1307-10	Mouse Pan B Cell Isolation Kit (100T)	Negative (Indirect Labeling)	for 1*10 ⁹ total cells
	K1308-10	Mouse CD4+CD25+ Regulatory T Cell Isolation Kit	Hybrid Labeling	for 1*10 ⁹ total cells
	K1201-10	Human CD3+ Cell Separation Kit (RUO,100T)	Positive (Indirect Labeling)	for 1*10 ⁹ total cells
	K1202-10	Human CD4+ Cell Separation Kit (RUO,100T)	Positive (Indirect Labeling)	for 1*10 ⁹ total cells
	K1203-10	Human CD8+ Cell Separation Kit (RUO,100T)	Positive (Indirect Labeling)	for 1*10 ⁹ total cells
	K1204-10	Human CD14+ Cell Separation Kit (RUO,100T)	Positive (Indirect Labeling)	for 1*10 ⁹ total cells
	K1205-10	Human CD45+ Cell Separation Kit (RUO,100T)	Positive (Indirect Labeling)	for 1*10 ⁹ total cells
	K1206-10	Human CD19+ Cell Separation Kit (RUO,100T)	Positive (Indirect Labeling)	for 1*10 ⁹ total cells
	K1207-10	Human NK Cell Isolation Kit (RUO,100T)	Negative (Indirect Labeling)	for 1*10 ⁹ total cells
	K1208-10	Human CD4+CD25+ Regulatory T Cell Isolation Kit	Hybrid Labeling	for 1*10 ⁹ total cells
	K1209-20	Human CD34 Separation Kit (RUO,200T)	Positive (Indirect Labeling)	for 2*10 ⁹ total cells
	Column based Direct Labeling	B1302-20	Mouse CD4 (L3T4) Nanobeads (RUO,200T)	Positive (Direct Labeling)
B1303-20		Mouse CD8 (Ly-2) Nanobeads (RUO,200T)	Positive (Direct Labeling)	for 2*10 ⁹ total cells
B1201-10		Human CD31 NanoBeads (RUO,100T)	Positive (Direct Labeling)	for 1*10 ⁹ total cells
Universal	K1200-10	Streptavidin NanoBeads-100T (Universal)	Positive (Indirect Labeling)	for 1*10 ⁹ total cells
	B2000-20	Anti-FITC NanoBeads-200T (Universal)	Positive (Indirect Labeling)	for 2*10 ⁹ total cells
	B2001-10	Anti-PE NanoBeads-100T (Universal)	Positive (Indirect Labeling)	for 1*10 ⁹ total cells

Consumables & Accessories-Column based

Cat. No.	Product Name	Size
LSC-S1	LSC Separator (single channel)	1 pcs
SS01	Separation stand	1 pcs
CSAK-01	Cell Separation assembly kit (single channel)	1 Set / Includes 1 Box of LarSep Columns (25 pcs) + 1 LSC Separator and 1 Separation stand
HCSC-100	LarSep Columns (4box, 25pcs/box)	100pcs
HCSC-25	LarSep Columns (25pcs/box)	25pcs
HCSC-5	LarSep Columns (5pcs/box)	5pcs
MCSC-25	MedSep Columns (25pcs/box)	25pcs
MCSC-5	MedSep Columns (5pcs/box)	5pcs

Magnetic Cell Separation System (Column Free)

Product Description

- Comprising a column-free magnetic and dedicated sorting kits, the system streamlines cell isolation. Simply place the labeled cell suspension in a 5 mL FACS tube. The stable magnetic field generated by the separator quickly binds target (or non-target) cells to the tube wall, allowing you to effortlessly obtain purified cells by decanting.



Product features

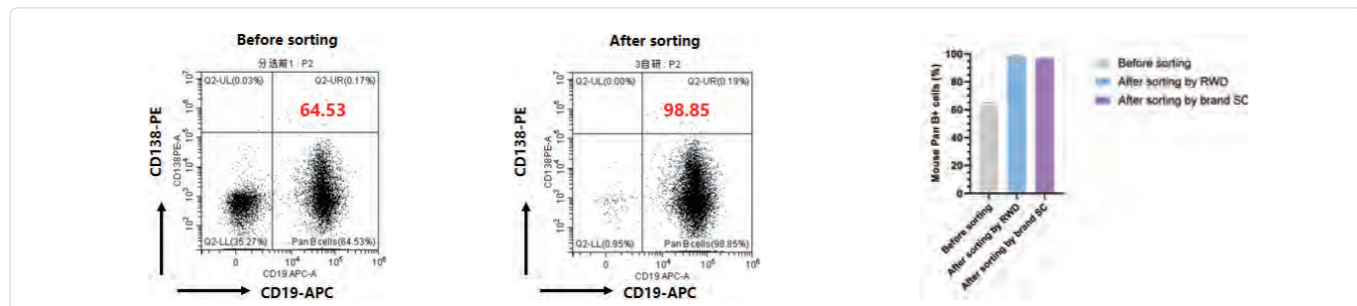
Compared with column-based systems, the column-free solution offers the following advantages:

- Simplified Setup and Cost Efficiency:**
No need for additional consumables such as magnetic stands or separation columns; the entire workflow can be completed using standard 5 mL round-bottom flow cytometry tubes.
- Convenient Operation and Higher Efficiency:**
Streamlined workflow with fewer steps; the separation process is typically completed within 15 minutes.



Data Showcase

Mouse Pan B Cell Isolation Kit-100T (Column Free,Negative)



Using the Mouse Pan B Cell Isolation Kit (K1307-10, RWD), Pan B cells were isolated from the spleens of C57BL/6J mice (6–8 weeks old). Flow cytometry analysis showed that Pan B+ cells accounted for approximately 60% before separation, while the purity of Pan B+ cells after isolation was consistently >95%. Cell viability showed no significant difference compared to pre-isolation levels, and the isolated cells can be directly used for downstream applications.

Order information-Column free

Species	Cat. No.	Product Name	Sorting mode	Kit Size
Mouse	F1501-10	Mouse Pan B Cell Isolation Kit-CF (100T)	Negative (Indirect Labeling)	for 1*10 ⁹ total cells
	F1502-10	Mouse NK Cell Isolation Kit-CF (100T)	Negative (Indirect Labeling)	for 1*10 ⁹ total cells
	F1505-10	Mouse Naive CD8 T Cell Isolation Kit-CF (100T)	Negative (Indirect Labeling)	for 1*10 ⁹ total cells
	F1506-10	Mouse Naive CD4 T Cell Isolation Kit-CF (100T)	Negative (Indirect Labeling)	for 1*10 ⁹ total cells
	F1508-10	Mouse CD4 T Cell Isolation Kit-CF (100T)	Negative (Indirect Labeling)	for 1*10 ⁹ total cells
	F1512-10	Mouse CD8 T Cell Isolation Kit (100T)	Negative (Indirect Labeling)	for 1*10 ⁹ total cells
Human	F1401-10	Human NK Cell Isolation Kit-CF (RUO,100T)	Negative (Indirect Labeling)	for 1*10 ⁹ total cells
	F1402-10	Human CD8 T Cell Isolation Kit (100T)	Negative (Indirect Labeling)	for 1*10 ⁹ total cells
	F1509-10	Human CD4 T Cell Isolation Kit-CF (RUO,100T)	Negative (Indirect Labeling)	for 1*10 ⁹ total cells
	F1510-10	Human CD19 Cell Separation Kit-CF (RUO,100T)	Positive (Indirect Labeling)	for 1*10 ⁹ total cells
	F1511-10	Human CD3 Cell Separation Kit-CF (RUO,100T)	Positive (Indirect Labeling)	for 1*10 ⁹ total cells
Accessory	CFMS-S1	Magnetic cell separator-CF (single channel)	/	1 pcs (Compatible with 5 mL tubes)

Tissue Enzymatic Digestion Kit

Engineered for efficient tissue dissociation, this kit delivers high-viability primary single-cell/nucleus suspensions. The optimized enzyme cocktail gently dissociates the extracellular matrix while preserving cell structure and surface epitope integrity. Achieve high yield and high viability—ready for flow cytometry, primary culture, single-cell/nucleus sequencing, and organoid construction.



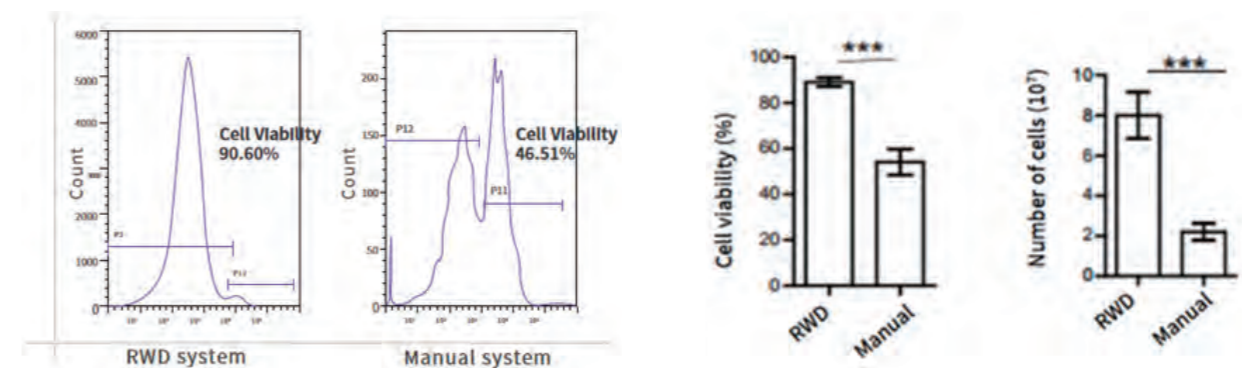
Product Features

Component	Key Features
Specific Enzyme Cocktail	Tissue-optimized; high viability, high yield, low debris
Complete Buffer System	Gentle, controlled digestion; preserves surface epitopes
Broad Coverage	Mouse, rat, human, monkey, pig, chicken, aquatic species; 100+ tissue types validated
Downstream Support	Flow cytometry, single-cell/nucleus sequencing, primary culture, organoid construction



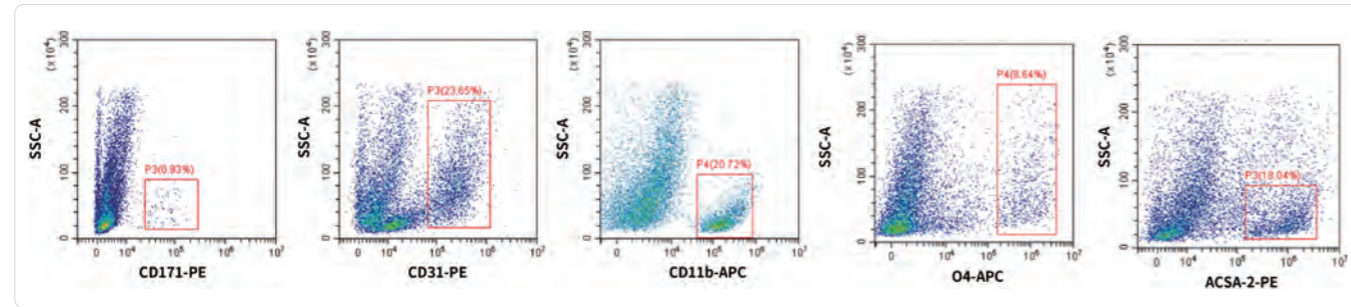
Key Value

- High tissue specificity, superior viability and yield compared to manual methods.



Flow cytometry analysis of mouse lung cancer tissue dissociated with RWD Tissue Dissociation Kit (DHTE-5001) vs. self-prepared enzyme. RWD kit consistently achieved >90% cell viability (vs. <50% with self-prepared), with significantly higher cell yield under identical starting tissue weight. These data demonstrate superior digestion efficiency and cell protection of the RWD system.

② Gentle enzymatic system preserves intact cell surface antigens.



Adult C57BL/6J mouse brain tissue was dissociated using the High Activity Adult Mouse and Rat Brain Enzymatic Digestion Kit (DHABE-5003, RWD) and analyzed by flow cytometry. Major neural subsets—CD11b+ microglia, CD31+ endothelial cells, O4+ oligodendrocytes, CD171+ neurons, and ACSA-2+ astrocytes—were clearly detected with intact distribution. The kit provides gentle yet efficient dissociation, preserving subset-specific surface antigens for neural cell composition and functional studies.

③ Flexible Protocols to Accommodate Diverse Experimental Schedules

The Tissue Dissociation Kit supports two flexible application protocols to meet the needs of different experimental scenarios:

Automated Solution: Maximized Efficiency, Minimized Variability

Fully compatible with RWD Single-Cell Suspension Dissociator for standardized, high-throughput tissue dissociation. Features mechanical dissociation, tissue-specific preset programs, and 37°C/4°C temperature control. Delivers single-cell suspensions with high viability, high yield, and intact surface antigens. Supports multi-channel parallel processing – shortens hands-on time and ensures batch-to-batch consistency.



Single cell suspension dissociator

Cat. No.	Product Description	Specification
DSC-200	Single Cell Suspension Dissociator (two channels)	2 channels
DSC-410	Single Cell Suspension Dissociator (four channels)	4 channels
DSC-810	Single Cell Suspension Dissociator (eight channels)	8 channels
SCT-25	Tissue Processing Tube	25 pcs/box
SCT-100	Tissue Processing Tube	100 pcs/box
HJ-400	Heating Jacket	4 pcs/box

Tissue Processing Tube

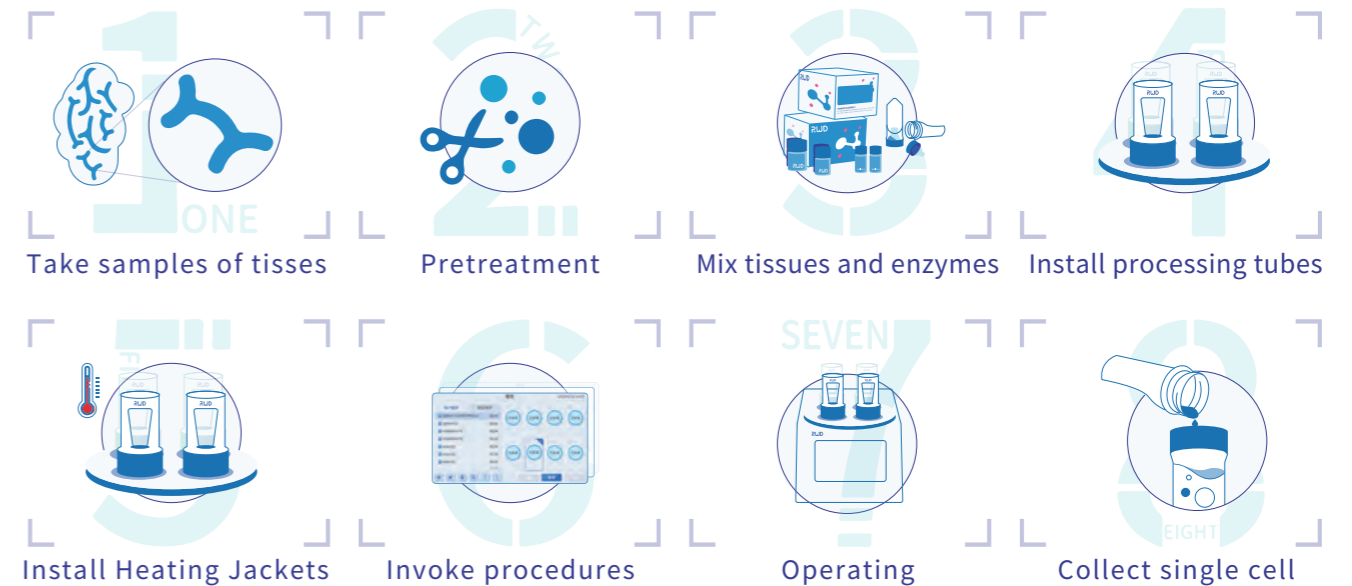
Using together with single cell suspension dissociator and tissue digestion kits, high-quality single-cell suspensions can be rapidly obtained. Products are EO-sterilized and integrally packaged to ensure sterility and safety, while the compact design allows convenient storage and immediate ready-to-use functionality.

Model	SCT-25	pecification
Sample Throughput	20-4000mg	
Buffer Volume	0.3-10 mL	
Dimensions	35mm*89mm	
Size	25 units/box	4 boxes × 25 units/box



Tissue processing tube

Workflow



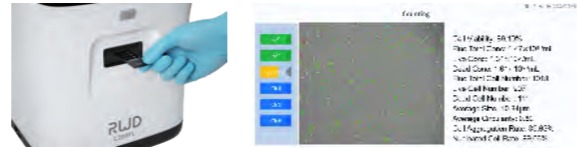
Manual Protocol: Flexible Choice, Cost-Effective Solution

The kit also provides a complete manual preparation protocol, allowing tissue dissociation using a water bath and shaker. This method ensures high cell viability and high yield while offering greater operational flexibility and cost-effectiveness.

Ordering Information

Cat. No.	Product Name	Kit Size
DHTE-5001	High Activity Mouse Tumor Tissue Enzymatic Digestion Kit-25T	50T
DHNBE-5002	High Activity Neonatal Mouse and Rat Brain Enzymatic Digestion Kit-50T	50T
DHABE-5003	High Activity Adult Mouse and Rat Brain Enzymatic Digestion Kit-50T	50T
DHGTP-5004	High Activity General Tissue Enzymatic Digestion Kit II	50T
DHTEH-2505	High Activity Human Tumor Tissue Enzymatic Digestion Kit-25T	25T
DHDR-5006	High Efficiency Debris Removal Kit-50T	50T
DHIE-5007	High Activity Mouse Intestine Tissue Enzymatic Digestion Kit-50T	50T
DHBTE-2508	High Activity Brain Tumor Enzymatic Digestion Kit-25T	25T
DHWSE-2509	High Activity Mouse Whole Skin Enzymatic Digestion Kit-25T	25T
DHAE-5010	High Activity Mouse and Rat Adipose Tissue Enzymatic Digestion Kit-50T	50T
DHME-5012	High Activity Mouse and Rat Muscle Tissue Enzymatic Digestion Kit-50T	50T
DHNE-2511	High Efficiency Nuclei Extraction Kit-25T	25T
DHHE-2515	High Activity Mouse and Rat Hepatocyte Extraction Kit-15T	15T
DHUTE-2516	High Activity Human Umbilical Cord Enzymatic Digestion Kit-25T	25T
DHFTE-2518	High Activity Neonatal Mouse And Rat Heart Enzymatic Digestion Kit-25T	25T
DHNCE-2517	High Activity FFPE Tissue Enzymatic Digestion Kit-25T	25T

Cell Counting Slide



DS-66 Disposable counting slide (6-channels)



C200FL Fluorescent Cell Counter

Why Use Automated Cell Counting?

Accurate Counting, Reliable Viability

High-precision enumeration and viability assessment with excellent repeatability.

Results in 9 Seconds, Ultra-Simple Operation

Rapid, streamlined workflow designed for ease of use.

Compatible with Multiple Sample Types, Flexible & Versatile

Adaptable to a wide range of cell samples to meet diverse research needs.

Ordering Information

Cat. No.	Product Name	Size	Reusability
DS-50	Disposable counting slide (2-channels)	50 pcs/box	No
DS-500	Disposable counting slide (2-channels, big size)	10 boxes, 50 pcs/box	No
DS-66	Disposable counting slide (6-channels)	50 pcs/box	No
RS-100	Reusable counting slide (1-channel)	1 pcs/box	Yes



DS-50 Disposable counting slide (2-channels)

RS-100 Reusable counting slide

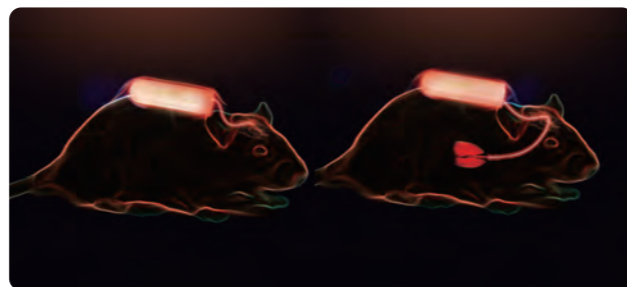
C100/C100-SE Automated Cell Counter

Osmotic Pump

The osmotic pump utilizes osmotic pressure principles to continuously and long-term delivery medication through subcutaneous or intraperitoneal implantation in laboratory animals. Constructed from biocompatible materials, the pump prevents immune rejection, while each unit undergoes gamma irradiation sterilization to ensure a non-inflammatory response upon implantation in mice.

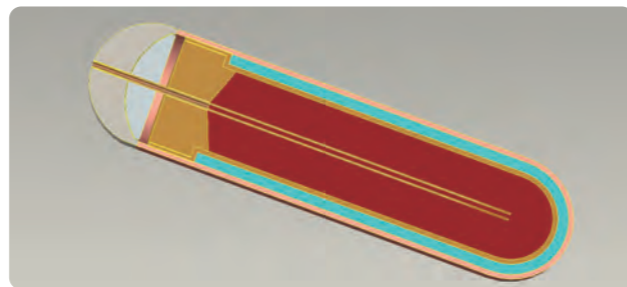
Specification: 100 µL

Cat. No.	Product Name	Specification
1003D	Osmotic Pumps - 100µL - 3 days	10 pcs/box
1001W	Osmotic Pumps - 100µL - 1 week	10 pcs/box
1002W	Osmotic Pumps - 100µL - 2 weeks	10 pcs/box
1004W	Osmotic Pumps - 100µL - 4 weeks	10 pcs/box
1006W	Osmotic Pumps - 100µL - 6 weeks	10 pcs/box



Specification: 200 µL

Cat. No.	Product Name	Specification
2003D	Osmotic Pumps - 200µL - 3 days	10 pcs/box
2001W	Osmotic Pumps - 200µL - 1 week	10 pcs/box
2002W	Osmotic Pumps - 200µL - 2 weeks	10 pcs/box
2004W	Osmotic Pumps - 200µL - 4 weeks	10 pcs/box



Specification: 2mL

Cat. No.	Product Name	Specification
2ML1W	Osmotic Pumps - 2mL - 1 week	10 pcs/box
2ML2W	Osmotic Pumps - 2mL - 2 weeks	10 pcs/box
2ML4W	Osmotic Pumps - 2mL - 4 weeks	10 pcs/box

- Implantable solution: Minimally invasive, rapid recovery.

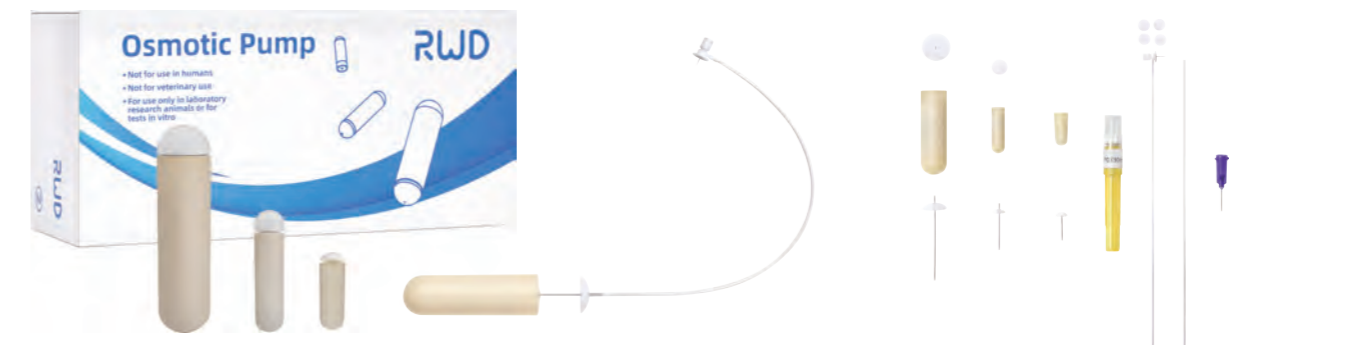
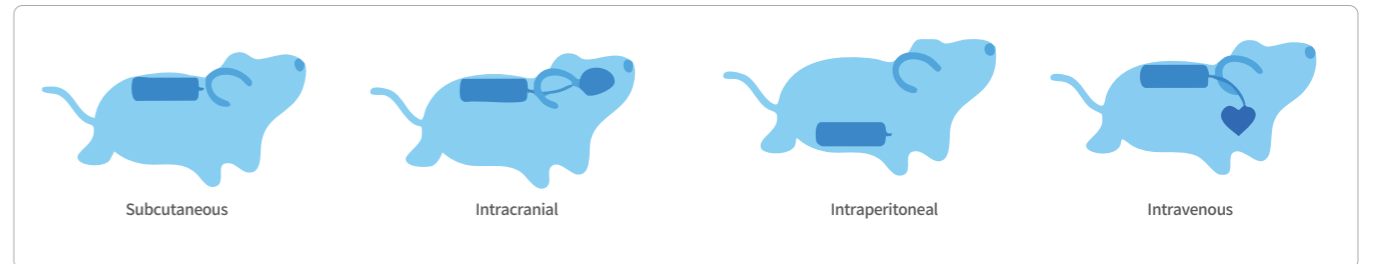
Brain Infusion Kit

Cat. No.	Product Name	Specification
Bic-3	Brain Infusion Kit (1-3mm)	10 pcs/pack
Bic-5	Brain Infusion Kit (3-5mm)	10 pcs/pack
Bic-7	Brain Infusion Kit (5-7mm)	10 pcs/pack
Bic-9	Brain Infusion Kit (7-9mm)	10 pcs/pack
Bic-X	Brain Infusion Kit (1-9mm)	10 pcs/pack

Vascular Infusion Catheter

Cat. No.	Product Name	Specification
PURJV	Jugular Vein Catheters for Rats	5 pcs/pkg
PURCA	Carotid Artery Catheters for Rats	5 pcs/pkg
PURFV	Femoral Vein Catheters for Rats	5 pcs/pkg
PURFA	Femoral Artery Catheters for Rats	5 pcs/pkg
PUCJV	Jugular Vein Catheters for Guinea pigs	5 pcs/pkg
PUCCA	Carotid Artery Catheters for Guinea pigs	5 pcs/pkg

- Minimizes animal stress; maintains a constant infusion rate.



Vascular Infusion and Sampling System for Small Animals

The catheter is surgically implanted into target vessels or ducts—including the jugular vein, carotid artery, bile duct, and portal vein—and the access port is secured on the animal's back, enabling simultaneous infusion and blood sampling. Supports manual operation via syringe or automated workflows using micro-injection pumps, making it ideal for repeated sampling, long-term automated dosing, and high-frequency experimental protocols.

Implant Button (for mice)

Cat. No.	Product Name	Specification
BMS25	Implant Button(Single channel 25G for mice)	5 pcs/pkg
BMD25/25	Implant Button(Dual channel 25G/25G for mice)	5 pcs/pkg



Implant Button (for rats)

Cat. No.	Product Name	Specification
BRSW22	Implant Button(Single channel 22G for rats, white)	5 pcs/pkg
BRSR22	Implant Button(Single channel 22G for rats, red)	5 pcs/pkg
BRD22/22	Implant Button(Dual channel 22G/22G for rats)	5 pcs/pkg



Catheter

Cat. No.	Product Name	Specification
PUMCA	Carotid Artery Catheters for Mice	5 pcs/pkg
PUMJV	Jugular Vein Catheters for Mice	5 pcs/pkg
PUCJV	Jugular Vein Catheters for Guinea pigs	5 pcs/pkg
PUCCA	Carotid Artery Catheters for Guinea pigs	5 pcs/pkg
PURCA	Carotid Artery Catheters for Rats	5 pcs/pkg
PURJV	Jugular Vein Catheters for Rats	5 pcs/pkg
PURBD	Bile Duct Catheters for Rats	5 pcs/pkg
PURFA	Femoral Artery Catheters for Rats	5 pcs/pkg
PURFV	Femoral Vein Catheters for Rats	5 pcs/pkg



PharmPort

Cat. No.	Product Name	Specification
P22-R	PharmPort(22G Red)	5 pcs/pkg
P22-W	PharmPort(22G White)	5 pcs/pkg
P25-R	PharmPort(25G Red)	5 pcs/pkg
P25-W	PharmPort(25G White)	5 pcs/pkg



Catheter Adapter

Cat. No.	Product Name	Specification
C22	Port-to-catheter connector (22G)	6 pcs/pkg
C25	Port-to-catheter connector (25G)	6 pcs/pkg
SC-1	Syringe Adapter	6 pcs/pkg



Tether

Cat. No.	Product Name	Specification
TM-1	Tether(Single channel for mice)	5 pcs/pkg
TM-2	Tether(Dual channel for mice)	5 pcs/pkg
TR-1dr	Tether(Single channel for rats,special for drug infusion)	5 pcs/pkg
TR-1bl	Tether(Single channel for rats,special for blood collection)	5 pcs/pkg
TR-2	Tether(Dual channel for rats)	5 pcs/pkg



Swivels

Cat. No.	Product Name	Specification
SS1-22	Single Channel Swivels(For rats) 22G	1 pcs/pkg
SS1-25	Single Channel Swivels For mice 25G	1 pcs/pkg



Implant Kit

Cat. No.	Product Name	Specification
RJV-P1	Rat Jugular Vein Implant Kit	single channel
RCA-B1	Rat Carotid Artery Implant Kit	single channel
MJV-P1	Mouse Jugular Vein Implant Kit	single channel
MCA-B1	Mouse Carotid Artery Implant Kit	single channel

Implant Button Cap (for mice)

Cat. No.	Product Name	Specification
CMSC-S	Implant Button Cap (Single channel for mice,silver)	5 pcs/pkg
CMSC-G	Implant Button Cap (Single channel for mice, gold)	5 pcs/pkg
CMDC-S	Implant Button Cap (Dual channel for mice, silver)	5 pcs/pkg
CMDC-G	Implant Button Cap (Dual channel for mice,gold)	5 pcs/pkg

Implant Button Cap (for rats)

Cat. No.	Product Name	Specification
CRSC-S	Implant Button Cap(Rats, silver)	5 pcs/pkg
CRSC-G	Implant Button Cap(Rats, gold)	5 pcs/pkg



Accessories

Cat. No.	Product Name	Specification
BH	Handling	1 pcs/pkg
BC-22	Bulk Catheter 22	10m /pkg
BC-25	Bulk Catheter 25	10m /pkg
DZXHQ	Bile Loop	5 pcs/pkg



Syringe Pump

Ventilator System for Small Animals

The RWD Non-Invasive Ventilator System with Wireless Fiber-Optic Guidance is engineered to stabilize small rodents, such as mice and rats, in an optimal and comfortable position for tracheal intubation. This system significantly minimizes tissue trauma and enhances procedural efficiency while ensuring high accuracy and reproducible results. By streamlining the intubation process, it effectively upholds the highest standards of animal welfare in laboratory research.

Kit

Cat. No.	Product Name	Description
RE20-3	Endotracheal Intubation Fiber Optic Lighting Kits for Mouse & Rat	Includes: 1 Illumination source, fiber-optic cable, 1 intubation magnifier, 1 laryngoscope, and 1 charging set; used to guide tracheal intubation.
RE20-R	Rat Endotracheal Intubation Kit	Includes: 1 Rat intubation stand, 1 box of rat cannulae (5x14G, 5x16G), 1 fiber-optic illumination system, 1 laryngoscope, surgical instruments(F12005-10 straight forceps, F12006-10 curved forceps), and 1 pack of incisor silk sutures.
RE20-M	Mouse Endotracheal Intubation Kit	Includes: 1 Mouse intubation stand, 1 box of mouse cannulae (5x18G, 5x20G), 1 fiber-optic illumination system, 1 laryngoscope, surgical instruments (F12005-10 straight forceps, F12006-10 curved forceps), and 1 pack of incisor silk sutures.



Intubation Stand

Cat. No.	Product Name
RE20-1M	Mouse Intubation Stand
RE20-1R	Rat Intubation Stand



Endotracheal Tube

Cat. No.	Product Name	Size
RE20-2R	Small Rat Endotracheal Tube	16G, 10pcs/pkg
RE20-2BR	Rat Endotracheal Tube (>300g)	14G, 10pcs/pkg
RE20-2M	Mouse Endotracheal Tube (>35g)	18G, 10pcs/pkg
RE20-2SM	Mouse Endotracheal Tube(≤35g)	20G, 10pcs/pkg



Cranial Drill & Drill Bit

Cat. No.	Product Name	Size
78001	Microdrill (bits not included)	pkg of 5
78040	Drill Bits HM1005 0.5mm, Round Tip	pkg of 5
78041	Drill Bits HM1006 0.6mm, Round Tip	pkg of 5
78042	Drill Bits HM1008 0.8mm, Round Tip	pkg of 5
78043	Drill Bits HM1010 1.0mm, Round Tip	pkg of 5
78060	Drill Bits HM31008 0.8mm, Flat Tip	pkg of 5



Illuminator

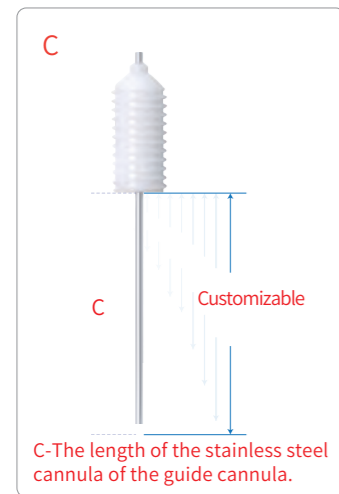
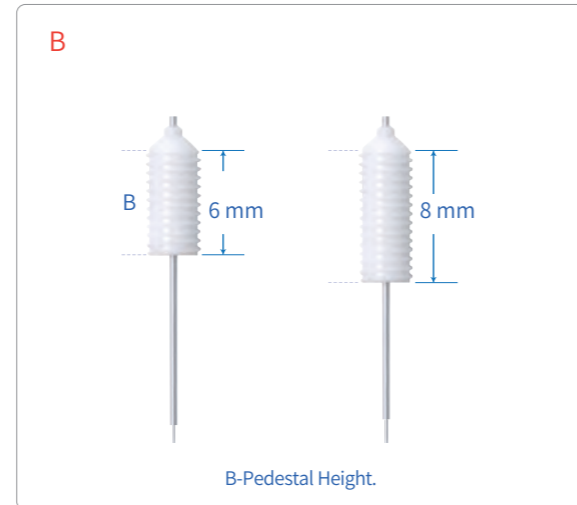
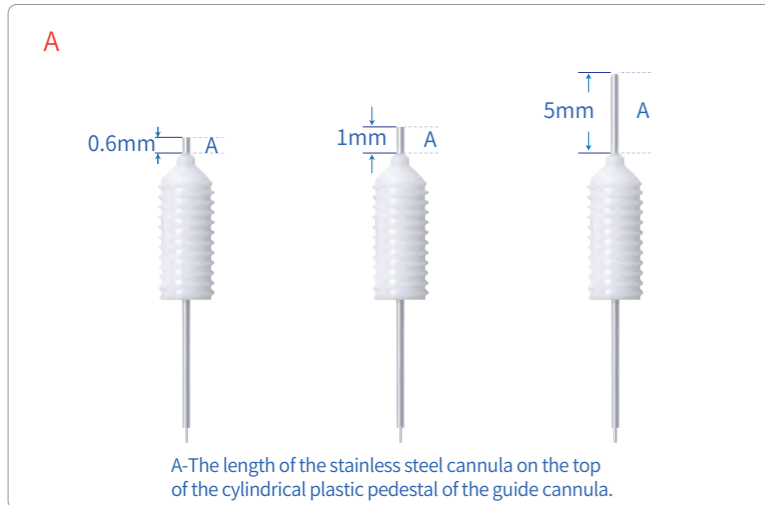
Model	Product Description	Remarks
76316	LED Fiber Optic Illuminator, 20W, 100-240V	Includes a main unit and dual optical fibers



Brain Microinjection Accessories

Single cannula

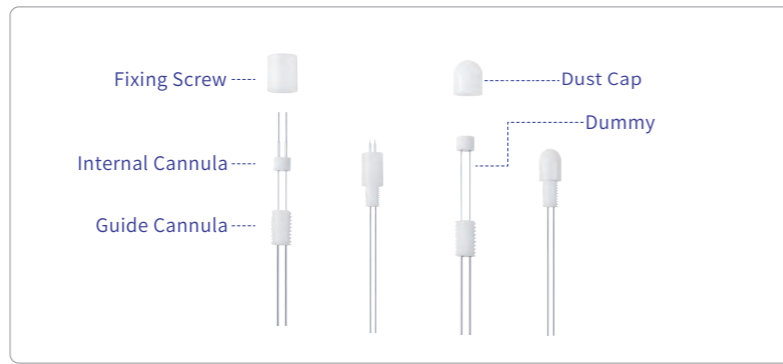
The microinjection cannula is designed for stereotaxically implant the guide cannula in the targeted brain region of the experimental animals for acute and chronic intracranial drug administration. RWD offers customized services for users, the users can customize according to specific experimental requirements.



Product Type	Guide Cannula (OD×ID)	Internal Cannula (OD×ID)	Dummy Cannula (MOQ: 10 units)		Fixing Screw (MOQ: 5units)	A	B	E	PU Tube	Phamport		Cannula Holder						
	MOQ: 10 units	MOQ: 10 units	Plastic OD	Metal OD						Red	White							
Single cannula	62001 (23G) (0.64×0.45)	62201 (27G) (0.41×0.25)	62101 0.4	62106 0.4	62502	0.6	6	3.5	BC-22	P22-R	P22-W	68205	68217	68221				
	62002 (24G) (0.56×0.38)	62202 (28G) (0.36×0.20)	62102 0.3	62107 0.3		0.6	6											
	62003 (26G) (0.48×0.34)	62203 (30G) (0.30×0.14)	62102 0.3	62107 0.3		0.6	6											
	62004 (27G) (0.41×0.25)	62204 (33G) (0.21×0.10)	62104 0.2	62108 0.2		0.6	6											
	62005 (22G) (0.71×0.45)	62201 (27G) (0.41×0.25)	62101 0.4	62106 0.4		1	6											
	62006 (22G) (0.71×0.45)	62201 (27G) (0.41×0.25)	62101 0.4	62106 0.4		1	8											
	62007 (23G) (0.64×0.45)	62201 (27G) (0.41×0.25)	62101 0.4	62106 0.4		0.6	8											
	62009 (26G) (0.48×0.34)	62203 (30G) (0.30×0.14)	62102 0.3	62107 0.3		0.6	8											
	62010 (27G) (0.41×0.25)	62204 (33G) (0.21×0.10)	62104 0.2	62108 0.2		0.6	8											
	62011 (22G) (0.71×0.45)	/	62109 0.4	/		/	5								6			
	62014 (26G) (0.48×0.34)	/	62110 0.3	/		/	5								6	BC-25	P25-R	P25-W
	62015 (27G) (0.41×0.25)	/	62111 0.2	/		/	5								6	62330		

Bilateral Cannula

The bilateral cannula system is used for bilateral implantations in the cranial



C.C

C.C → 0.6-3.2 mm
C.C- The center distance between the two cannulas of the bilateral guide cannula.

B

B → 5.5 mm / 7.8 mm
B- Pedestal Height.

C

C → Customizable
C- The length of the stainless steel cannula of the bilateral guide cannula.

D

D →
D- Outer diameter of the single metal cannula.

E

3.5 mm / 5.5 mm
E- Outer diameter of the cylindrical plastic pedestal.

F1

5 mm / 7 mm
F1
F1- Outer diameter of the fixing screw.

F2

5.5 mm / 7 mm
F2
F2- Outer diameter of the dummy cannula.

G1

G1 → Customizable
G2- The length of the protruding part of the dummy cannula when it is inserted into the guide cannula.

G2

G2 → Customizable
G2- The length of the protruding part of the dummy cannula when it is inserted into the guide cannula.

H1

H1 → 7.5 mm / 8 mm
H1
H1- Height of the fixing screw.

H2

H2 → 7 mm / 7.5 mm
H2
H2- Height of the dummy cannula.

Series I - Rat/Mouse Double Cannula (Unit: mm)

Product Type	C.C	Guide Cannula (OD×ID) MOQ: 10 units	Internal Cannula (OD×ID) MOQ: 10 units	Bilateral Cannula Dummies MOQ: 10 units	Cap MOQ: 10 units		Fixing Screw MOQ: 5 units	PU Tube	Pharmport		Cannula Holder
					Plastic OD	Metal OD			Red	White	
Bilateral Cannula Series I (E=3.5)	0.6	62022	62250	62122	62523	62525	62521	BC-22	P22-R	P22-W	68205
	0.8	62023	62223	62123							
	1.0	62024	62224	62124							
	1.2	62025	62225	62125							
	1.4	62027	62227	62127							
	1.5	62028	62228	62128							
	1.6	62029	62229	62129							
	1.8	62030	62230	62130							
Bilateral Cannula Series I (E=5.5)	2.0	62031	62231	62131	62527	62529	62528				68230
	2.2	62072	62272	62150							
	2.4	62073	62273	62151							
	2.6	62074	62274	62152							
	3.0	62075	62275	62153							
	3.2	62076	62276	62154							

Series II - Rat(23G)

Product Type	C.C	Guide Cannula (OD×ID) MOQ: 10 units	Internal Cannula (OD×ID) MOQ: 10 units	Bilateral Cannula Dummies MOQ: 10 units	Cap MOQ: 10 units		Fixing Screw MOQ: 5 units	PU Tube	Pharmport		Cannula Holder
					Plastic OD	Metal OD			Red	White	
Bilateral Cannula Series II (E=3.5)	0.8	62037	62237	62137	62523	62525	62521	BC-22	P22-R	P22-W	68205
	1.0	62038	62238	62138							
	1.2	62039	62239	62139							
	1.4	62041	62241	62141							
	1.5	62042	62242	62142							
Bilateral Cannula Series II (E=5.5)	1.8	62082	62160	62282	62527	62529	62528				68230
	2.0	62077	62155	62277							
	2.2	62078	62156	62278							
	2.4	62079	62157	62279							
	3.0	62080	62158	62280							
	3.2	62081	62159	62281							

Series III - Mouse(26G)

Product Type	C.C	Guide Cannula (OD×ID)	Internal Cannula (OD×ID)	Bilateral Cannula Dummies	Cap MOQ: 10 units		Fixing Screw MOQ: 5 units	PU Tube	Pharmport		Cannula Holder
		MOQ: 10 units	MOQ: 5 units	MOQ: 10 units	Plastic OD	Metal OD	Red		White		
Bilateral Cannula Series III (E=3.5)	0.8	62052	62223	62123	62523	62525	62521	BC-22	P22-R	P22-W	68205
	1.0	62053	62224	62124							
	1.2	62054	62225	62125							
	1.4	62056	62227	62127							
	1.5	62057	62228	62128							
	1.6	62058	62229	62129							
	1.8	62059	62230	62130							
	2.0	62060	62231	62131							

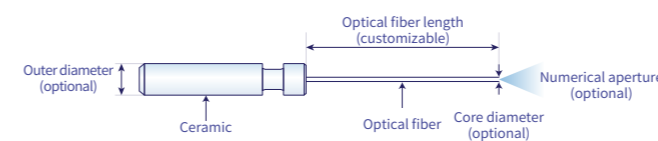
Series IV - Mouse(27G)

Product Type	C.C	Guide Cannula (OD×ID)	Internal Cannula (OD×ID)	Bilateral Cannula Dummies	Cap MOQ: 10 units		Fixing Screw MOQ: 5 units	PU Tube	Pharmport		Cannula Holder
		MOQ: 10 units	MOQ: 5 units	MOQ: 10 units	Plastic OD	Metal OD	Red		White		
Bilateral Cannula Series IV (E=3.5)	0.6	62062	62251	62162	62523	62525	62521	BC-22	P22-R	P22-W	68205
	0.8	62063	62263	62163							
	1.0	62064	62264	62164							
	1.2	62065	62265	62165							
	1.4	62067	62267	62167							
	1.5	62068	62268	62168							
	1.6	62069	62269	62169							
	2.0	62071	62271	62171							

Fiber-optic Cannulas

Fiber optic cannulae are mainly used in optogenetics and fiber photometry experiments, which are implanted in specific brain regions of animals via stereotaxic instruments for transmitting excitation light and collecting emission light, in order to modulate or detect changes of neural cell activity.

- Material: Ceramic, Optical fiber
- Numerical aperture: 0.22, 0.39, 0.50
- Core diameter: 100µm, 200µm, 300µm, 400µm
- Outer diameter: 1.25mm (6.4mm long), 2.5mm (10.5mm long)
- Optical fiber length: 1-20mm step 0.5mm (Can be customized)
- Light transmittance ≥ 90%, Fiber curvature rate ≥ 90%



Ø1.25 mm fiber optic cannula, White (20 pcs/pack)

Numerical aperture / NA	200µm	300µm	400µm
0.22	R-FOC-L200C-22NA	R-FOC-L300C-22NA	R-FOC-L400C-22NA
0.39	R-FOC-L200C-39NA	R-FOC-L300C-39NA	R-FOC-L400C-39NA
0.5	R-FOC-L200C-50NA	/	R-FOC-L400C-50NA

Ø1.25 mm fiber optic cannula, Black (20 pcs/pack)

Numerical aperture / NA	100µm	200µm	300µm	400µm
0.22	R-FOC-BL100C-22NA	R-FOC-BL200C-22NA	R-FOC-BL300C-22NA	R-FOC-BL400C-22NA
0.39	/	R-FOC-BL200C-39NA	R-FOC-BL300C-39NA	R-FOC-BL400C-39NA
0.5	/	R-FOC-BL200C-50NA	/	R-FOC-BL400C-50NA

Ø2.5 mm fiber optic cannula, White (20 pcs/pack)

Numerical aperture / NA	200µm	300µm	400µm
0.22	R-FOC-F200C-22NA	R-FOC-F300C-22NA	R-FOC-F400C-22NA
0.39	R-FOC-F200C-39NA	R-FOC-F300C-39NA	R-FOC-F400C-39NA
0.5	R-FOC-F200C-50NA	/	R-FOC-F400C-50NA

Ø2.5 mm fiber optic cannula, Black (20 pcs/pack)

Numerical aperture / NA	100µm	200µm	300µm	400µm
0.22	R-FOC-BF100C-22NA	R-FOC-BF200C-22NA	R-FOC-BF300C-22NA	R-FOC-BF400C-22NA
0.39	/	R-FOC-BF200C-39NA	R-FOC-BF300C-39NA	R-FOC-BF400C-39NA
0.5	/	R-FOC-BF200C-50NA	/	R-FOC-BF400C-50NA

Fiber Optic Rotary Joint

Cat. No.	Product Name
R-FC-1x1	FC-FC Optic Fiber Commutator
FRJ_1x1_PT_200-0.37_1m_FCM_0.15m_FCM	Fiber Photometry 1x1 Fiber-optic Rotary Joint

Ceramic Sleeves

Cat. No.	Product Name	Specification
R-MS-1.25	Ceramic Sleeves, Φ1.25mm	200 pcs/pkg
R-MS-2.5	Ceramic Sleeves, Φ2.5mm	200 pcs/pkg

Black Ceramic Sleeves

Cat. No.	Product Name	Specification
R-BMS-1.2	Black Ceramic Sleeves, Φ1.25mm	20 pcs/pkg
R-BMS-2.5	Black Ceramic Sleeves, Φ2.5mm	20 pcs/pkg

Ceramic Ferrules Protective Cap

Cat. No.	Product Name	Specification
R-DC-2.5	FC/PC Ceramic Ferrules Protective Cap - Φ2.50mm	200 pcs/pkg
R-DC-1.25	LC/PC Ceramic Ferrules Protective Cap - Φ1.25mm	200 pcs/pkg

Optical Fiber & Patchcord

- Low insertion loss • Good repeatability • High thermal stability • Superior Interchangeability • Multiple Fiber Options Available
- Numerical aperture: 0.22, 0.39, 0.50 • Applicable wavelength: 400nm-1100nm • Core diameter: 100µm, 200µm, 300µm, 400µm
- Default length is 1m, other length:1.5-5m, step 0.5m (customized)

Cat.No.	Product Description
R-FC-PC-N2-100-L1	FC/PC Optical Fiber Patch Cables(m) - 100µm,0.22NA,1m
R-FC-PC-N2-200-L1	FC/PC Optical Fiber Patch Cables(m) - 200µm,0.22NA,1m
R-FC-PC-N3-200-L1	FC/PC Optical Fiber Patch Cables(m) - 200µm,0.39NA,1m
R-FC-PC-N5-200-L1	FC/PC Optical Fiber Patch Cables(m) - 200µm,0.50NA,1m
R-FC-PC-N2-300-L1	FC/PC Optical Fiber Patch Cables(m) - 300µm,0.22NA,1m
R-FC-PC-N3-300-L1	FC/PC Optical Fiber Patch Cables(m) - 300µm,0.39NA,1m
R-FC-PC-N2-400-L1	FC/PC Optical Fiber Patch Cables(m) - 400µm,0.22NA,1m
R-FC-PC-N3-400-L1	FC/PC Optical Fiber Patch Cables(m) - 400µm,0.39NA,1m
R-FC-PC-N5-400-L1	FC/PC Optical Fiber Patch Cables(m) - 400µm,0.50NA,1m



Patchcord

Cat.No.	Product Description
R-FC-P-N2-100-L1	Optic Fiber(m), FC/PC Adapter with Φ2.5 mm Ceramic Ferrule, 100µm Core, 0.22NA, 1m
R-FC-L-N2-100-L1	Optic Fiber(m), FC/PC Adapter with Φ1.25 mm Ceramic Ferrule, 100µm Core, 0.22NA, 1m
R-FC-P-N2-200-L1	Optic Fiber(m), FC/PC Adapter with Φ2.5 mm Ceramic Ferrule, 200µm Core, 0.22NA, 1m
R-FC-L-N2-200-L1	Optic Fiber(m), FC/PC Adapter with Φ1.25 mm Ceramic Ferrule, 200µm Core, 0.22NA, 1m
R-FC-P-N3-200-L1	Optic Fiber(m), FC/PC Adapter with Φ2.5 mm Ceramic Ferrule, 200µm Core, 0.39NA, 1m
R-FC-L-N3-200-L1	Optic Fiber(m), FC/PC Adapter with Φ1.25 mm Ceramic Ferrule, 200µm Core, 0.39NA, 1m
R-FC-P-N5-200-L1	Optic Fiber(m), FC/PC Adapter with Φ2.5 mm Ceramic Ferrule, 200µm Core, 0.50NA, 1m
R-FC-L-N5-200-L1	Optic Fiber(m), FC/PC Adapter with Φ1.25 mm Ceramic Ferrule, 200µm Core, 0.50NA, 1m
R-FC-P-N2-300-L1	Optic Fiber(m), FC/PC Adapter with Φ2.5 mm Ceramic Ferrule, 300µm Core, 0.22NA, 1m
R-FC-L-N2-300-L1	Optic Fiber(m), FC/PC Adapter with Φ1.25 mm Ceramic Ferrule, 300µm Core, 0.22NA, 1m
R-FC-P-N3-300-L1	Optic Fiber(m), FC/PC Adapter with Φ2.5 mm Ceramic Ferrule, 300µm Core, 0.39NA, 1m
R-FC-L-N3-300-L1	Optic Fiber(m), FC/PC Adapter with Φ1.25 mm Ceramic Ferrule, 300µm Core, 0.39NA, 1m
R-FC-P-N2-400-L1	Optic Fiber(m), FC/PC Adapter with Φ2.5 mm Ceramic Ferrule, 400µm Core, 0.22NA, 1m
R-FC-L-N2-400-L1	Optic Fiber(m), FC/PC Adapter with Φ1.25 mm Ceramic Ferrule, 400µm Core, 0.22NA, 1m
R-FC-P-N3-400-L1	Optic Fiber(m), FC/PC Adapter with Φ2.5 mm Ceramic Ferrule, 400µm Core, 0.39NA, 1m
R-FC-L-N3-400-L1	Optic Fiber(m), FC/PC Adapter with Φ1.25 mm Ceramic Ferrule, 400µm Core, 0.39NA, 1m
R-FC-P-N5-400-L1	Optic Fiber(m), FC/PC Adapter with Φ2.5 mm Ceramic Ferrule, 400µm Core, 0.50NA, 1m
R-FC-L-N5-400-L1	Optic Fiber(m), FC/PC Adapter with Φ1.25 mm Ceramic Ferrule, 400µm Core, 0.50NA, 1m
MFP_200/220/900-0.37_2m_FCM_MF1.25_LAF	Doric Mono Fiberoptic Patchcord-Low AutoFluorescence,FC/PC Adapter with Φ1.25mm Ferrule, 200um Core, 0.37NA, 2m
MFP_200/220/900-0.37_2m_FCM_MF2.5_LAF	Doric Mono Fiberoptic Patchcord-Low AutoFluorescence,FC/PC Adapter with Φ2.5mm Ferrule, 200um Core, 0.37NA, 2m



Optical Fiber

Cat. No.	Product Description
YSOS-1*2-200S-5:5-150/50-1.25FC	Fusion fiber-200µm, NA0.22, FC/PC Adapter with Ø1.25 mm Ceramic Ferrule, bundle end-1.5m, beam splitting end-0.5m
YSOS-1*2-200S-5:5-200/100-1.25FC	Fusion fiber-200µm, NA0.22, FC/PC Adapter with Ø1.25 mm Ceramic Ferrule, bundle end-2m, beam splitting end-1m
YXOS-1*2-473-200/220-2.0-Φ2.5(FC) (150/50cm)	Fusion fiber-200µm, NA0.22, FC/PC Adapter with Ø2.5 mm Ceramic Ferrule, bundle end -1.5m, beam splitting end-0.5m
YXOS-1*2-473-200/220-3.0-Φ2.5(FC) (200/100cm)	Fusion fiber-200µm, NA0.22, FC/PC Adapter with Ø2.5 mm Ceramic Ferrule, bundle end-2m, beam splitting end-1m
YSOS-1*2-200-5:5-150/50-1.25FC	Fusion fiber-200µm, NA0.37, FC/PC Adapter with Ø1.25 mm Ceramic Ferrule, bundle end-1.5m, beam splitting end-0.5m
YSOS-1*2-200-5:5-200/100-1.25FC	Fusion fiber-200µm, NA0.37, FC/PC Adapter with Ø1.25 mm Ceramic Ferrule, bundle end-2m, beam splitting end-1m
YXOS-1*2-473-2.0-Φ2.5(FC) (150/50cm)	Fusion fiber-200µm, NA0.37, FC/PC Adapter with Ø2.5 mm Ceramic Ferrule, bundle end-1.5m, beam splitting end-0.5m
YXOS-1*2-473-3.0-Φ2.5 (FC) (200/100cm)	Fusion fiber-200µm, NA0.37, FC/PC Adapter with Ø2.5 mm Ceramic Ferrule, bundle end-2m, beam splitting end-1m



Fusion fiber

Cat. No.	Product Description
BBP(2)_200/220/900-0.37_2m_FCM-2xMF1.25_LAFF	Low Autofluorescence Bundle Branching Fiber-optic Patch Cords/2 Output fibers/200um/0.37NA/Φ1.25mm
BBP(2)_200/220/900-0.37_2m_FCM-2xMF2.5_LAFF	Low Autofluorescence Bundle Branching Fiber-optic Patch Cords/2 Output fibers/200um/0.37NA/Φ2.5mm
BFP(4)_200/220 / 900-0.37_2m_FCM * - 4xMF1.25	Low Autofluorescence Bundle Branching Fiber-optic Patch Cords/4 Output fibers/200um/0.37NA/Φ1.25mm
BBP(7)_200/220/900_0.37_2m_FCM-7xMF1.25	Low Autofluorescence Bundle Branching Fiber-optic Patch Cords/7 Output fibers/200um/0.37NA/Φ1.25mm
RWDF-1*2-2.0-N0.37-C200-FC (Φ1.25B)	Low Autofluorescence Bundle Branching Fiber-optic Patch Cords/2 Output fibers/200um/0.37NA/Φ1.25mm
RWDF-1*2-2.0-N0.37-C400-FC (Φ1.25B)	Low Autofluorescence Bundle Branching Fiber-optic Patch Cords/2 Output fibers/400um/0.37NA/Φ1.25mm
YXOY-1*4-3.0-FC (Φ1.25 black)	4 Branches Low Autofluorescence Optical Fiber, Length 3m, Core 200µm, NA 0.37, FC-PC, 1.25mm Black Connector
RWDF-1*2-473-2.0-FC (Φ1.25) (100/100cm)	Optogenetics, Splitter 2 Branches Optical fiber, FC-PC, Core 200µm, 0.27NA, 1.25mm Connector



Fiber photometry-ranching Fiber-optic, 2 Output Fibers



Fiber Optogenetics-ranching Fiber-optic, 2 Output Fibers

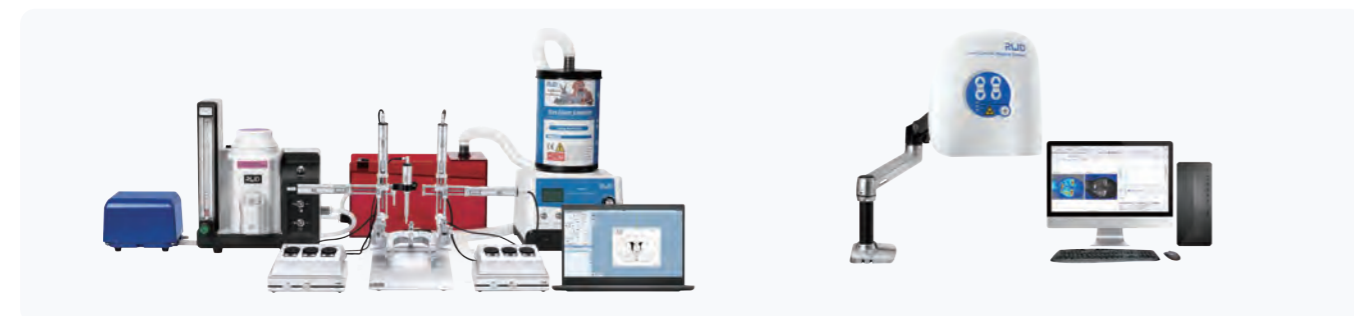
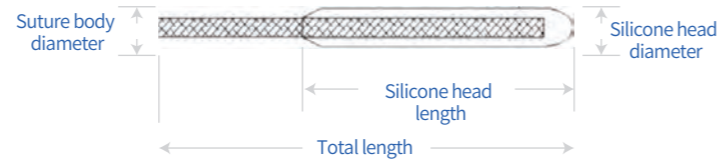
MCAOSutures

Crafted from premium silicone-coated nylon, these sutures feature optimized flexibility to ensure smooth navigation from the external carotid artery to the MCA bifurcation without causing vascular damage or deviation. Validated through extensive experimental trials, our sutures offer a wide range of diameters tailored for both mice and rats of varying weights. This precision-engineered design significantly enhances modeling success rates and provides a stable, user-friendly experience for highly reproducible stroke research.

MCAOSutures

Cat. No.	Silicone head diameter (mm)	Silicone head length (mm)	Suture body diameter (mm)	Total length (mm)	Animal's weight (g)	Packaging (pcs/box)
MSMC19B007PK10	0.17-0.19	3~4	0.07	30	15-20g	10
MSMC19B008PK10	0.17-0.19	3~4	0.08	30	15-20g	10
MSMC19B100PK10	0.17-0.19	3~4	0.10	30	15-20g	10
MSMC21B007PK10	0.20-0.21	3~4	0.07	30	21-25g	10
MSMC21B008PK10	0.20-0.21	3~4	0.08	30	21-25g	10
MSMC21B100PK10	0.20-0.21	3~4	0.10	30	21-25g	10
MSMC21B120PK10	0.20-0.21	3~4	0.12	30	21-25g	10
MSMC23B007PK10	0.22-0.23	3~4	0.07	30	26-30g	10
MSMC23B008PK10	0.22-0.23	3~4	0.08	30	26-30g	10
MSMC23B100PK10	0.22-0.23	3~4	0.10	30	26-30g	10
MSMC23B120PK10	0.22-0.23	3~4	0.12	30	26-30g	10
MSMC25B120PK10	0.24-0.25	3~4	0.12	30	31-35g	10
MSMC25B150PK10	0.24-0.25	3~4	0.15	30	31-35g	10
MSMC26B150PK10	0.25-0.26	3~4	0.15	30	35g>	10
MSRC32B200PK10	0.31-0.32	5~6	0.20	50	200g<	10
MSRC35B200PK10	0.33-0.35	5~6	0.20	50	200-250g	10
MSRC37B200PK10	0.36-0.37	5~6	0.20	50	251-280g	10
MSRC40B200PK10	0.38-0.40	5~6	0.20	50	281-330g	10
MSRC42B200PK10	0.41-0.42	5~6	0.20	50	331-400g	10
MSRC45B200PK10	0.43-0.45	5~6	0.20	50	400g>	10

Note: 50 pcs/box, regular sales available.



Small Animal Anesthesia System

Laser Speckle Imaging System

Gas Filter Canister

It is used for adsorbing gases such as isoflurane, sevoflurane and enflurane, and is for single use. There are two sizes available for selection: the large filter canister has a saturated absorption increment of 200g (factory weight 800g), and the small one has a saturated absorption increment of 50g (factory weight 250g).

Gas Filter Canister

Cat. No.	Product Description
R510-31S-6	Gas Filter Canister, Small, pkg of 6pcs
R510-31-6	as Filter Canister, Large, pkg of 6pcs



Glass Capillary Tubes

Capillary glass tubes can be processed into glass electrodes with various tip sizes and geometries using a micropipette puller, offering excellent consistency and stability. When used with micro-injection pumps, they are widely applied in precise experimental techniques such as patch-clamp recording and microinjection.

Glass capillary with filament

Cat. No.	Dimensions (I.D.×O.D.×L)	Specification
B-10050-10F	1.0×0.50×100mm	200 pcs/box
B-10078-10F	1.0×0.78×100mm	200 pcs/box
B-12069-10F	1.2×0.69×100mm	200 pcs/box
B-12094-10F	1.2×0.94×100mm	200 pcs/box
B-15086-10F	1.5×0.86×100mm	200 pcs/box
B-150110-10F	1.5×1.10×100mm	200 pcs/box
B-15086-8.5F	1.5×0.86×85mm	200 pcs/box
B-150110-8.5F	1.5×1.10×85mm	200 pcs/box



Glass capillary without filament

Cat. No.	Dimensions (I.D.×O.D.×L)	Specification
GC-3.5	1.14×0.53×88.9mm	100 pcs/box
GC-7	1.14×0.53×177.8mm	100 pcs/box



Surgical Instruments

RWD offers a comprehensive portfolio of over 10 categories and hundreds of models, including surgical scissors, forceps, orthopedic instruments, scalpels and blades, hemostatic forceps, and needle holders. Our extensive range is designed to address the long-standing challenges in basic research and veterinary clinical applications, providing reliable solutions for every precision task.



Model:S12034-12
 ● Blade Length:17mm
 ● Blade Width:6mm
Straight ● Total Length:12.5cm

Model:S12007-10
 ● Blade Length:21mm
 ● Blade Width:4.2mm
 ● Total Length:10.5cm

Model:S12000-09
 ● Blade Length:24mm
 ● Blade Width:4.2mm
 ● Total Length:9cm

Model:S12011-12
 ● Blade Length:31mm
 ● Blade Width:5.8mm
 ● Total Length:12.5cm



Model:S12008-10
 ● Blade Length:21mm
 ● Blade Width:4.6mm
Curved ● Total Length:10.5cm

Model:S12010-11
 ● Blade Length:23.5mm
 ● Blade Width:6mm
 ● Total Length:11.5cm

Model:S12001-09
 ● Blade Length:24mm
 ● Blade Width:4.6mm
 ● Total Length:9cm

Model:S12031-11
 ● Blade Length:29mm
 ● Blade Width:6mm
 ● Total Length:11.5cm



IRIS-Fine Scissor



S11001-08 ▲
 ● Blade Length:8mm
 ● Blade Width:1.55mm
Straight ● Total Length:8cm

S11035-08 ▲
 ● Blade Length:3.5mm
 ● Blade Width:1.3mm
 ● Total Length:8cm

S11036-08 ◡
 ● Blade Length:8.2mm
 ● Blade Width:1.5mm
 ● Total Length:8cm



Model:S11007-12
 ● Blade Length:19mm
 ● Blade Width:4.25mm
 ● Total Length:12.5cm

Model:S11019-14
 ● Blade Length:14.5mm
 ● Blade Width:3.2mm
 ● Total Length:14cm

Model:S11014-12
 ● Blade Length:5.5mm
 ● Blade Width:1.9mm
 ● Total Length:12.5cm



Model:S11002-08
 ● Blade Length:8mm
 ● Blade Width:1.55mm
Curved ● Total Length:8cm

Model:S11037-08
 ● Blade Length:8mm
 ● Blade Width:1.5mm
 ● Total Length:8cm

Model:S11008-12
 ● Blade Length:14mm
 ● Blade Width:4.5mm
 ● Total Length:12cm

Model:S11022-14
 ● Blade Length:14.5mm
 ● Blade Width:3.2mm
 ● Total Length:14cm



Model:S11003-08
 ● Blade Length:6.3mm
 ● Blade Width:1.35mm
Angled ● Total Length:8.5cm



Spring Scissor



Model:S14014-10
 ● Blade Length:32.7mm
 ● Blade Width:8.45mm
Sharp-tip ● Total Length:10.5cm

Model:S14014-12
 ● Blade Length:37.6mm
 ● Blade Width:8.5mm
 ● Total Length:12.5cm

Model:S14014-13
 ● Blade Length:45mm
 ● Blade Width:9.8mm
 ● Total Length:13cm

Model:S14014-15
 ● Blade Length:48mm
 ● Blade Width:10mm
 ● Total Length:15.5cm



Model:S13050-15
 ● Blade Length:32.7mm
 ● Blade Width:8.45mm
Blunt-tip ● Total Length:15cm



Artery Forceps



Artery Forceps

Model:F21001-12
 ● Total Length:12.5cm
 ● Tip Width:1.0mm



Artery Forceps

Model:F21019-16
 ● Total Length:16cm
 ● Tip Width:1.0mm



Model:F21002-12
 ● Total Length:12.5cm
 ● Tip Width:1.0mm



Model:F22003-10
 ● Total Length:10cm
 ● Tip Width:1.0mm



Model:F21020-16
 ● Total Length:16cm
 ● Tip Width:1.5mm



Model:F21011-14
 ● Total Length:14.5cm
 ● Tip Width:2.0mm



Model:F22002-10
 ● Total Length:10.5cm
 ● Tip Width:0.8mm



Scalpels

Model:S33006-13
 ● Blade Length:25mm
 ● Blade Width:3mm
 ● Total Length:13cm



Scalpel Handle 3#

Model:S32003-12
 ● Total Length:12.5cm



Scalpel Blade 10#

Model:S31010-01
 ● 100 pcs/box
 Note: Suit for 3# Scalpel Handles



Scalpel Blade 15#

Model:S31015-01
 ● 100 pcs/box
 Note: Suit for 3# Scalpel Handles



Scalpel Handle 4#

Model:S32004-13
 ● Total Length:14cm



Scalpel Blade Remover

Model:S33009-06
 ● Total Length:6.5cm
 Note: Suit for 3# , 4#Scalpel Handles



Scalpel Blade 21#

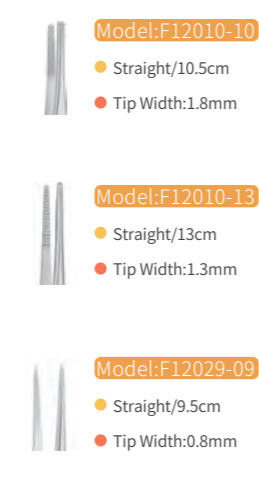
Model:S31021-02
 ● 100 pcs/box
 Note: Suit for 4# Scalpel Handles



ADSON Dissecting Scissor
Model:F12002-12
● Straight/12cm
● Tip Width:0.6mm



Dissecting Scissor
Model:F12019-10
● Straight/10.5cm
● Tip Width:2.0mm



Dissecting Scissor
Model:F12011-13
● Curved/13cm
● Tip Width:1.2mm



IRIS Dissecting Forceps
Model:F12005-10
● Straight/10cm
● Tip Width:1.0mm



Tissue Forcep
Model:F13029-10
● Straight/1x2Teeth/10.5cm
● Tip Width:1.3mm



Tissue Forcep
Model:F18017-09
● Ring/9cm
● Inner/Outer Diameter:2.2/3.2mm



Suture Forcep
Model:F18011-09
● Straight/9cm
● Tip 0.4 x 0.9 mm
Platform 5mm



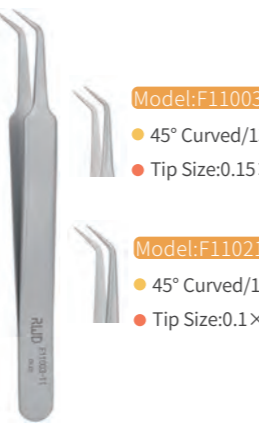
Micro Forceps
Model:F11029-11
● Straight/Titanium Alloy 11cm
● Tip Size:0.14x0.09mm



Micro Forceps
Model:F11027-13
● Straight/13cm
● Tip Size:0.1x0.06mm



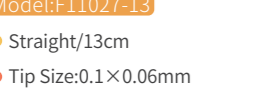
Micro Forceps
Model:F11001-11
● Straight/11cm
● Tip Size:0.2x0.12mm



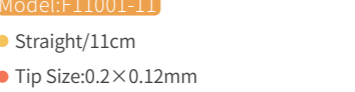
Micro Forceps
Model:F11003-11
● 45° Curved/11cm
● Tip Size:0.3x0.15mm



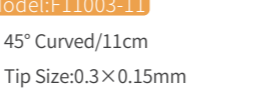
Micro Forceps
Model:F11022-11
● Curved/11.5cm
● Tip Size:0.1x0.06mm



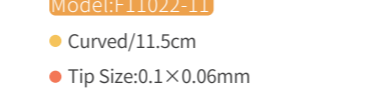
Micro Forceps
Model:F11028-13
● Curved/13cm
● Tip Size:0.1x0.06mm



Micro Forceps
Model:F11020-11
● Straight/11cm
● Tip Size:0.05x0.01mm



Micro Forceps
Model:F11003-13
● 45° Curved/13cm
● Tip Size:0.15x0.1mm



Micro Forceps
Model:F11004-11
● Curved/11cm
● Tip Size:0.2x0.12mm



Micro Forceps
Model:F13004-11
● Curved/11.5cm
● Tip Size:0.3x0.15mm



Retractors
Model:R22005-45
● Blunt/3x3Teeth/5cm
● Retraction Range:36mm



Retractors
Model:R22029-03
● 3cm
● Retraction Range:11mm



Retractors
Model:R22009-01
● 7.5cm
● Retraction Range:65mm



Retractors
Model:R22029-04
● 4cm
● Retraction Range:20mm



Retractors
Model:R22013-10
● 2x3 Teeth Retractor
● Blunt/10cm



Tying Forceps
Model:FC11001R-11
● Straight/11cm/HeadLength:23.5mm
● Tip size: 0.3x0.5mm/6mm platform



Tying Forceps
Model:FC11002R-08
● Straight/8.5cm/HeadLength:26.5mm
● Tip size: 0.3x0.5mm/6mm platform



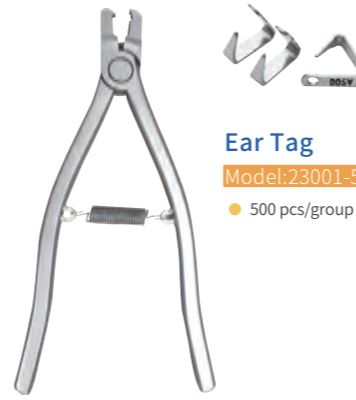
Tying Forceps
Model:FC11001T-11
● Straight/11cm/Head Length:23.5mm
● Tip size: 0.3x0.5/6mm platform
Titanium



Tying Forceps
Model:FC11002T-08
● Straight/8.5cm/Head Length:26.5mm
● Tip size: 0.3x0.5/6mm platform
Titanium



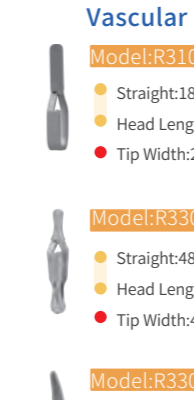
Finger Loop Ear Punch
Model:C22001-10
● Ring Handle/10.5cm
● Hole Diameter:1mm



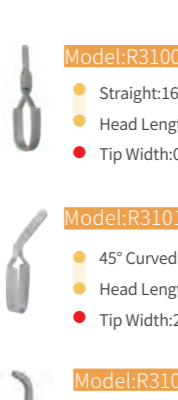
Ear Tag Applicator
Model:C23001-14
● For Mouse/Rat/Tip Width:2.55mm
14.5cm



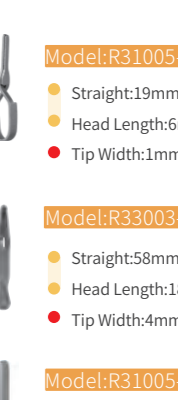
Vascular Clamp Applicator
Model:R34001-14
● 14cm



Vascular Clips
Model:R31005-08
● Straight:18mm
● Head Length:8mm
● Tip Width:2mm



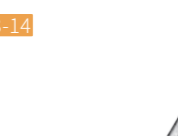
Vascular Clips
Model:R31005-04
● Straight:16mm
● Head Length:4mm
● Tip Width:0.75mm



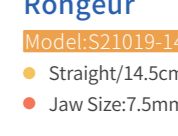
Vascular Clips
Model:R31005-06
● Straight:19mm
● Head Length:6mm
● Tip Width:1mm



Rongeur
Model:S21023-14
● Curved/14cm
● Jaw Size:7mm



Rongeur
Model:S21024-14
● Curved(Small)/15cm
● Jaw Width 2mm
● Jaw Length 19mm



Rongeur
Model:S21019-14
● Straight/14.5cm
● Jaw Size:7.5mm



BEEBE Bone Cutters

Model: S16001-10

- Straight/10.5cm
- Blade Width:10mm
- Blade Length:21mm



Bone Cutters

Model: S22005-12

- Flat/12.5cm
- Blade Width:7.4mm
- Blade Length:15.2mm

Surgery Instrument Kit

SP0002-G General Ophthalmic Surgery Instrument Kit for Rodents

Cat. No.	Product Name	Size
S11001-08	VANNAS Spring Scissors (Triangular)-S/S Str/8*1.5mm/8cm	1
S11002-08	VANNAS Spring Scissors (Triangular)-S/S Cvd/8*1.5mm/8cm	1
S11003-08	VANNAS Spring Scissors (Triangular)-S/S Angled/6.3*1.35mm/8.5cm	1
S12007-10	IRIS-Fine Scissors-S/S Str/Head length 21mm/Width 4.2mm, 10.5cm	1
S12008-10	IRIS-Fine Scissors-S/S Cvd/Head length 21mm/Width 4.6mm, 10.5cm	1
S15006-09	O'BRIEN Stitch Scissors-S/S Angled/13.5*4mm/9.5cm	1
F12013-10	Dressing Forceps w/o Serrations-45°Cvd, S/S, Tip 0.5*0.2mm, 10cm	1
F13019-12	ADSON 1x2 Teeth Tissue Forceps, Tip width 1.8mm, 12cm	1
F12005-10	IRIS Dissecting Forceps-Str, Tip width 1mm, teeth length 14mm, 10cm	1
F12006-10	IRIS Dissecting Forceps-Light Cvd, Tip width 1mm, teeth length 13.5mm, 10cm	1
F18011-09	McPHERSON Forceps w/5mm Platform-Str, Tip 0.4*0.9mm, 9cm	1
F31047-12	OLSEN-HEGAR Needle Holders with Scissors-Str, 8.5*1.5mm/12cm	1
F35401-50	NA Terylene Sutures w/Needle-○3/8/3×10/90cm/5-0 (50/Box)	20
R21013-01	MANNERFELT Hooks, 1 Tooth, Blunt, 15.5cm	1
R22029-04	Colibri Eye Specula-15mm spread, 4cm	1
SP0001-P	Instrument Storage Portfolio, 32*22cm	1

SP0001-G General Surgery Instrument Kit for Rodents

Cat. No.	Product Name	Size
S11001-08	VANNAS Spring Scissors (Triangular)-S/S Str/8cm	1
S11002-08	VANNAS Spring Scissors (Triangular)-S/S Cvd/8cm	1
S12011-11	IRIS-Fine Scissors-S/S Str/11.5cm	1
S12012-11	IRIS-Fine Scissors-S/S Cvd/11.5cm	1
S12007-10	IRIS-Fine Scissors-S/S Str/10.5cm	1
S12001-09	IRIS-Fine Scissors-S/S Cvd/9cm	1
F11001-11	Micro Forceps-Str, Tip 0.2*0.12mm, 11cm	1
F11004-11	Micro Forceps-Cvd, Tip 0.2*0.12mm, 11cm	1
F12010-10	Dressing Forceps-Str, Tip width 1.8mm, 10.5cm	1
F12011-10	Dressing Forceps-Cvd, Tip width 1.9mm, 10.5cm	1
F21001-12	HALSTED Artery Forceps-Str/1mm/12.5cm	2
F21002-12	HALSTED Artery Forceps-Cvd/1mm/12.5cm	2
F22002-10	HARTMAN Mosquito Forceps-Str/0.8mm/10.5cm	2
F22003-10	HARTMAN Mosquito Forceps-Cvd/1mm/10cm	2
F31047-12	OLSEN-HEGAR Needle Holders with Scissors-Str, 1.5mm/12cm	1
S13029-14	MAYO-STILLE Dissecting & Operating Scissors-B/B Str/14cm	1
S15001-11	SPENCER Ligature Scissors (Slender Type)-11cm	1
S21010-15	BOHLER Rongeurs (Double)-Light Cvd/2mm/15.5cm	1
S22004-11	Bone Cutters with Flat Blades (SGL)/11cm	1
S14014-12	Operating Scissors (Round Type)-S/S Str/12.5cm	1
S31011-01	11# Scalpel Blades (Box of 100pcs)	1
S32003-12	Scalpel Handles with Ruler 3# Solid-12.5cm	1
S33009-06	Scalpel Blade Remover-6.5cm	1
F13019-12	ADSON 1x2 Teeth Tissue Forceps, Tip width 1.8mm, 12cm	1
R21013-01	MANNERFELT Hooks, 1 Tooth, Blunt, 15.5cm	1
R22009-01	ALM 4x4 Teeth Retractors-Blunt, 65mm Spread, 7.5cm	1
R22005-45	3x3 Teeth Retractors-Blunt, 30mm Spread, 5cm	1
R51003-11	Dual-end Micro Spatula w/tip W. 2mm x Thk. 0.3mm - Cvd/11cm	1
F35204-70	NA Nylon Sutures w/Needle-△3/8/7-0 (50/Box)	20
F35401-50	NA Terylene Sutures w/Needle-○3/8/ 5-0 (50/Box)	20
R31006-06	SS Micro Clamps-Cvd/L*W 4*0.75mm/16mm	5
R31005-06	SS Micro Clamps-Str/L*W 6*1mm/19mm	5
R34001-14	Clip Applicator for R31005- and R31006-Clamps/14cm	1
SP0001-P	Instrument Storage Portfolio	1

SP0003-M Microsurgery Instrument Kit for Mice

Cat. No.	Product Name	Size
S12007-10	IRIS-Fine Scissors-S/S Str/10.5cm	1
S12001-09	IRIS-Fine Scissors-S/S Cvd/9cm	1
F31047-12	OLSEN-HEGAR Needle Holders with Scissors-Str,1.5mm/12cm	1
F11001-11	Micro Forceps-Str, Tip 0.2*0.12mm, 11cm	1
R31005-04	SS Micro Clamps-Str/L*W 4*0.75mm/16mm	5
R34001-14	Clip Applicator for R31005- and R31006-Clamps-8.4*5mm/14cm	1
S11001-08	VANNAS Spring Scissors (Triangular)-S/S Str/8cm	1
S11002-08	VANNAS Spring Scissors (Triangular)-S/S Cvd/8cm	1
F22002-10	HARTMAN Mosquito Forceps-Str/0.8mm/10.5cm	1
F22003-10	HARTMAN Mosquito Forceps-Cvd/1mm/10cm	1
F35401-50	NA Terylene Sutures w/Needle-○3/8 /5-0 (50/Box)	20
S32003-12	Scalpel Handles with Ruler 3# Solid-12.5cm	1
S31011-01	11# Scalpel Blades (Box of 100pcs)	1
SP0001-P	Instrument Storage Portfolio	1

SP0007-R Universal Dissecting Surgery Instrument Kit for Rat

Cat. No.	Product Name	Size
S12007-10	IRIS-Fine Scissors-S/S Str/10.5cm	1
S12008-10	IRIS-Fine Scissors-S/S Cvd/10.5cm	1
S12012-11	IRIS-Fine Scissors-S/S Cvd/11.5cm	1
S13029-14	MAYO-STILLE Dissecting & Operating Scissors-B/B Str/14cm	2
S13030-14	MAYO-STILLE Dissecting & Operating Scissors-B/B Cvd/14cm	2
F21001-12	HALSTED Artery Forceps-Str/1mm/12.5cm	2
F21002-12	HALSTED Artery Forceps-Cvd/1mm/12.5cm	2
F12010-10	Dressing Forceps-Str, Tip width 1.8mm, 10.5cm	1
F12011-10	Dressing Forceps-Cvd, Tip width 1.9mm, 10.5cm	1
F13029-10	IRIS 1x2 Teeth Tissue Forceps-Str, Tip width 1.3mm, 10.5cm	1
F31047-12	OLSEN-HEGAR Needle Holders with Scissors-Str, 1.5mm/12cm	1
S15001-11	SPENCER Ligature Scissors (Slender Type) /11cm	1
S32003-12	Scalpel Handles with Ruler 3# Solid-12.5cm	1
S31015-01	15# Scalpel Blades (Box of 100pcs)	1
F35305-50	NA Terylene Sutures w/Needle-○3/8 /5-0 (50/Box)	20
R22009-01	ALM 4x4 Teeth Retractors-Blunt, 65mm Spread, 7.5cm	1
R31005-06	SS Micro Clamps-Str/L*W 6*1mm/19mm	5
R42002-12	Spinal Cord Hook - Tip Dia. 3mm/12cm	1
R34001-14	Clip Applicator for R31005- and R31006-Clamps-14cm	1
SP0001-P	Instrument Storage Portfolio	1

SP0005-M Brain Microinjecti on Surgery Instrument Kit for Mice

Cat. No.	Product Name	Size
S31011-01	Scalpel Handles with Ruler 3# Solid-12.5cm	1
S32003-12	11# Scalpel Blades (Box of 100pcs)	1
S12007-10	IRIS-Fine Scissors-S/S Str/10.5cm	1
S12001-09	IRIS-Fine Scissors-S/S Cvd/9cm	1
S14014-11	Operating Scissors (Round Type)-S/S Str/10.5cm	1
F12005-10	IRIS Dissecting Forceps-Str, Tip width 1mm, 10cm	2
F12006-10	IRIS Dissecting Forceps-Light Cvd, Tip width 1mm, 10cm	2
F22002-10	HARTMAN Mosquito Forceps-Str/20*0.8mm/10.5cm	2
F31047-12	OLSEN-HEGAR Needle Holders with Scissors-Str,1.5mm/12cm	1
F35204-70	NA Nylon Sutures w/Needle-△3/8/2.5×5/30cm/7-0 (50/Box)	20
F22003-10	HARTMAN Mosquito Forceps-Cvd/Tip width 1mm/10cm	2
R51003-11	Dual-end Micro Spatula w/tip W. 2mm x Thk. 0.3mm - Cvd/11cm	1
SP0001-P	Instrument Storage Portfolio	1

SP0007-M Universal Dissecting Surgery Instrument Kit for Mice

Cat. No.	Product Name	Size
S12007-10	IRIS-Fine Scissors-S/S Str/10.5cm	1
S12001-09	IRIS-Fine Scissors-S/S Cvd/9cm	1
S13003-11	STEVENS Fine Dissecting Scissors (Flat Type)-B/B Str/11.5cm	1
S13004-11	STEVENS Fine Dissecting Scissors (Flat Type)-B/B Cvd/11.5cm	1
S15001-11	SPENCER Ligature Scissors (Slender Type)-11cm	1
S32003-12	Scalpel Handles with Ruler 3# Solid-12.5cm	1
S31015-01	15# Scalpel Blades (Box of 100pcs)	1
F12005-10	IRIS Dissecting Forceps-Str, Tip width 1mm, 10cm	2
F12006-10	IRIS Dissecting Forceps-Light Cvd, Tip width 1mm,10cm	2
F22002-10	HARTMAN Mosquito Forceps-Str/0.8mm/10.5cm	2
F22003-10	HARTMAN Mosquito Forceps-Cvd/1mm/10cm	2
F13029-10	IRIS 1x2 Teeth Tissue Forceps-Str, Tip width 1.3mm, 10.5cm	1
F31047-12	OLSEN-HEGAR Needle Holders with Scissors-Str,1.5mm/12cm	1
F35305-50	NA Terylene Sutures w/Needle-○3/8 /5-0 (50/Box)	20
R22005-45	3x3 Teeth Retractors-Blunt, 36mm Spread, 5cm	1
R31005-04	SS Micro Clamps-Str/L*W 4*0.75mm/16mm	5
R42002-12	Spinal Cord Hook - Tip Dia. 3mm/12cm	1
R34001-14	Clip Applicator for R31005- and R31006-Clamps-8.4*5mm/14cm	1
SP0001-P	Instrument Storage Portfolio	1

SP0005-R Brain Microinjection Surgery Instrument Kit for Rat

Cat. No.	Product Name	Size
S31011-01	Scalpel Handles with Ruler 3# Solid-12.5cm	1
S32003-12	11# Scalpel Blades (Box of 100pcs)	1
S12007-10	IRIS-Fine Scissors-S/S Str, 10.5cm	1
S12008-10	IRIS-Fine Scissors-S/S Cvd, 10.5cm	1
F12010-10	Dressing Forceps-Str, Tip width 1.8mm,10.5cm	2
F12011-10	Dressing Forceps-Cvd, Tip width 1.9mm,10.5cm	2
F22006-12	HALSTED Mosquito Forceps-Str, 1mm/12.5cm	2
F22007-12	HALSTED Mosquito Forceps-Cvd, 1mm/12.5cm	2
F31047-12	OLSEN-HEGAR Needle Holders with Scissors-Str,1.5mm/12cm	1
S14014-12	Operating Scissors (Round Type)-S/S Str/12.5cm	1
F35204-70	NA Nylon Sutures w/Needle-△3/8/7-0 (50/Box)	20
R22009-01	ALM 4x4 Teeth Retractors-Blunt, 65mm Spread, 7.5cm	1
R51003-11	Dual-end Micro Spatula w/tip W. 2mm x Thk. 0.3mm - Cvd/11cm	1
SP0001-P	Instrument Storage Portfolio	1

SP0008-M Cardio-cerebral Perfusion Surgery Instrument Kit for Mice

Cat. No.	Product Name	Size
S14014-11	Operating Scissors (Round Type)-S/S Str/10.5cm	1
S12007-10	IRIS-Fine Scissors-S/S Str/10.5cm	1
S11001-08	VANNAS Spring Scissors (Triangular)-S/S Str/8cm	1
F12007-10	IRIS Dissecting Forceps-Large Cvd, Tip width 1mm, 10cm	1
F12010-09	Dressing Forceps-Str, Tip width 1.8mm,10.5cm	2
F22002-10	HARTMAN Mosquito Forceps-Str/0.8mm/10.5cm	2
F22003-10	HARTMAN Mosquito Forceps-Cvd/1mm/10cm	2
F35305-50	NA Terylene Sutures w/Needle-○3/8 /5-0 (50/Box)	20
F35204-70	NA Terylene Sutures w/Needle-△3/8 /7-0 (50/Box)	20
R21013-01	MANNERFELT Hooks, 1 Tooth, Blunt, 15.5cm	1
R22005-45	3x3 Teeth Retractors-Blunt, 36mm Spread, 5cm	1
F31047-12	OLSEN-HEGAR Needle Holders with Scissors-Str,1.5mm/12cm	1
R31005-04	SS Micro Clamps-Str/L*W 4*0.75mm/16mm	5
R34001-14	Clip Applicator for R31005- and R31006-Clamps-14cm	1
R42002-12	Spinal Cord Hook - Tip Dia. 3mm/12cm	1
SP0001-P	Instrument Storage Portfolio	1

SP0008-R Cardio-cerebral Perfusion Surgery Instrument Kit for Rat

Cat. No.	Product Name	Size
S14014-12	Operating Scissors (Round Type)-S/S Str/12.5cm	1
S12007-10	IRIS-Fine Scissors-S/S Str/Head length 21mm/10.5cm	1
S11002-08	VANNAS Spring Scissors (Triangular)-S/S Cvd/8cm	1
F12007-10	IRIS Dissecting Forceps-Large Cvd, Tip width 1mm,10cm	1
F12005-10	IRIS Dissecting Forceps-Str, Tip width 1mm,10cm	2
F22006-12	HALSTED Mosquito Forceps-Str, 1mm/12.5cm	2
F22007-12	HALSTED Mosquito Forceps-Cvd, 1mm/12.5cm	2
F35305-50	NA Terylene Sutures w/Needle-○3/8 /5-0 (50/Box)	20
F35204-70	NA Terylene Sutures w/Needle-△3/8 /7-0 (50/Box)	20
R21013-01	MANNERFELT Hooks, 1 Tooth, Blunt, 15.5cm	1
R22005-45	3x3 Teeth Retractors-Blunt, 36mm Spread, 5cm	1
F31047-12	OLSEN-HEGAR Needle Holders with Scissors-Str,1.5mm/12cm	1
R31005-06	SS Micro Clamps-Str/6*1mm/16mm	2
R42002-12	Spinal Cord Hook - Tip Dia. 3mm/12cm	1
R34001-14	Clip Applicator for R31005- and R31006-Clamps-14cm	1
SP0001-P	Instrument Storage Portfolio	1

SP0003-R Microsurgery Instrument Kit for Rat,Cat, Rabbit etc.

Cat. No.	Product Name	Size
S12007-10	IRIS-Fine Scissors-S/S Str/10.5cm	1
S12012-11	IRIS-Fine Scissors-S/S Cvd/11.5cm	1
F31047-12	OLSEN-HEGAR Needle Holders with Scissors-Str,1.5mm/12cm	1
F11001-11	Micro Forceps-Str, head length 30mm, Tip 0.2*0.12mm, 11cm	1
R31005-06	SS Micro Clamps-Str/L*W 6*1mm/19mm	5
R34001-14	Clip Applicator for R31005- and R31006-Clamps/14cm	1
S11001-08	VANNAS Spring Scissors (Triangular)-S/S Str/8cm	1
S11002-08	VANNAS Spring Scissors (Triangular)-S/S Cvd/8cm	1
F22006-12	HALSTED Mosquito Forceps-Str, 1mm, 12.5cm	1
F22007-12	HALSTED Mosquito Forceps-Cvd,1mm, 12.5cm	1
F35401-50	NA Terylene Sutures w/Needle-○3/8 /5-0 (50/Box)	20
S32003-12	Scalpel Handles with Ruler 3# Solid-12.5cm	1
S31011-01	11# Scalpel Blades (Box of 100pcs)	1
SP0001-P	Instrument Storage Portfolio	1

SP0009-M General Surgery Instrument Kit for Mouse

Cat. No.	Product Name	Size
F11020-11	Micro Forceps-Str, head length 36mm, Tip 0.05*0.01mm, 11cm	1
F11021-11	Micro Forceps-45°Angled, head length 30mm, Tip 0.1*0.06mm, 11cm	1
S32003-12	Scalpel Handles with Ruler 3# Solid-12.5cm	1
S31011-01	11# Scalpel Blades (Box of 100pcs)	1
F35401-50	NA Terylene Sutures w/Needle-○3/8 /5-0 (50/Box)	20
F31047-12	OLSEN-HEGAR Needle Holders with Scissors-Str,1.5mm/12cm	1
S11001-08	VANNAS Spring Scissors (Triangular)-S/S Str/8cm	1
S11002-08	VANNAS Spring Scissors (Triangular)-S/S Cvd/8cm	1
R22029-04	Colibri Eye Specula-20mm spread, 4cm	1
F12005-10	IRIS Dissecting Forceps-Str, Tip width 1mm,10cm	1
F12006-10	IRIS Dissecting Forceps-Light Cvd, Tip width 1mm, teeth length 13.5mm, 10cm	1
F12007-10	IRIS Dissecting Forceps-Large Cvd, Tip width 1mm, teeth length 10mm, 10cm	1
F13029-10	IRIS 1x2 Teeth Tissue Forceps-Str, Tip width 1.3mm, 10.5cm	1
S12007-10	IRIS-Fine Scissors-S/S Str, 10.5cm	1
S12001-09	IRIS-Fine Scissors-S/S Cvd,9cm	1
F22002-10	HARTMAN Mosquito Forceps-Str/0.8mm/10.5cm	1
F22003-10	HARTMAN Mosquito Forceps-Cvd/1mm/10cm	1
SP0001-P	Instrument Storage Portfolio	1

Curved/14cm
Jaw Size:6.5mmC

SP0010-B Basic Surgical Instrument Kit for Rat & Mice

Cat. No.	Product Name	Size
S11001-08	VANNAS Spring Scissors (Triangular)-S/S Str/8cm	1
S12007-10	IRIS-Fine Scissors-S/S Str/10.5cm	1
F12005-10	IRIS Dissecting Forceps-Str, Tip width 1mm, 10cm	1
F12006-10	IRIS Dissecting Forceps-Light Cvd, Tip width 1mm, teeth length 13.5mm, 10cm	1
F11020-11	Micro Forceps-Str, head length 36mm, Tip 0.05*0.01mm, 11cm	1
F22002-10	HARTMAN Mosquito Forceps-Str/0.8mm/10.5cm	1
F22003-10	HARTMAN Mosquito Forceps-Cvd/1mm/10cm	1
F31047-12	OLSEN-HEGAR Needle Holders with Scissors-Str, 1.5mm/12cm	1
S33007-12	ZIEGLER Knives-8mm Cutting Edge/1.5mm Width/12cm	1
R31005-06	SS Micro Clamps-Str/L*W 6*1mm/19mm	1
R31006-06	SS Micro Clamps-Cvd/L*W 4*0.75mm/16mm	1
R34001-14	Clip Applicator for R31005- and R31006-Clamps/14cm	1
SP0001-P	Instrument Storage Portfolio	1

SP0009-R General Surgery Instrument Kit for Rat

Cat. No.	Product Name	Size
F11020-11	Micro Forceps-Str, head length 36mm, Tip 0.05*0.01mm, 11cm	1
F11021-11	Micro Forceps-45°Angled, head length 30mm, Tip 0.1*0.06mm, 11cm	1
S32003-12	Scalpel Handles with Ruler 3# Solid-12.5cm	1
S31011-01	11# Scalpel Blades (Box of 100pcs)	1
F35401-50	NA Terylene Sutures w/Needle-○3/8 /5-0 (50/Box)	20
F35204-70	NA Terylene Sutures w/Needle-△3/8 /7-0 (50/Box)	20
F31047-12	OLSEN-HEGAR Needle Holders with Scissors-Str,1.5mm/12cm	1
S11001-08	VANNAS Spring Scissors (Triangular)-S/S Str/8cm	1
S11002-08	VANNAS Spring Scissors (Triangular)-S/S Cvd/8cm	1
R22009-01	ALM 4x4 Teeth Retractors-Blunt, 65mm Spread, 7.5cm	1
F12005-10	IRIS Dissecting Forceps-Str, Tip width 1mm,10cm	1
F12006-10	IRIS Dissecting Forceps-Light Cvd, Tip width 1mm, teeth length 13.5mm, 10cm	1
F12007-10	IRIS Dissecting Forceps-Large Cvd, Tip width 0.9mm, teeth length 10mm, 10cm	1
F13029-10	IRIS 1x2 Teeth Tissue Forceps-Str, Tip width 1.3mm, 10.5cm	1
S12011-11	IRIS-Fine Scissors-S/S Str/ 11.5cm	1
S12012-11	IRIS-Fine Scissors-S/S Cvd/11.5cm	1
F21001-12	HALSTED Artery Forceps-Str/1mm/12.5cm	1
F21002-12	HALSTED Artery Forceps-Cvd/1mm/12.5cm	1
SP0001-P	Instrument Storage Portfolio	1

SP0010-L Lite Surgical Instrument Kit

Cat. No.	Product Name	Size
S11001-08	VANNAS Spring Scissors (Triangular)-S/S Str/8cm	1
S12007-10	IRIS-Fine Scissors-S/S Str/10.5cm	1
F12005-10	IRIS Dissecting Forceps-Str, Tip width 1mm, 10cm	1
F12006-10	IRIS Dissecting Forceps-Light Cvd, Tip width 1mm, teeth length 13.5mm, 10cm	1
F31047-12	OLSEN-HEGAR Needle Holders with Scissors-Str, 1.5mm/12cm	1
C12006-02	Sterilization Trays-215*135*22mm	1

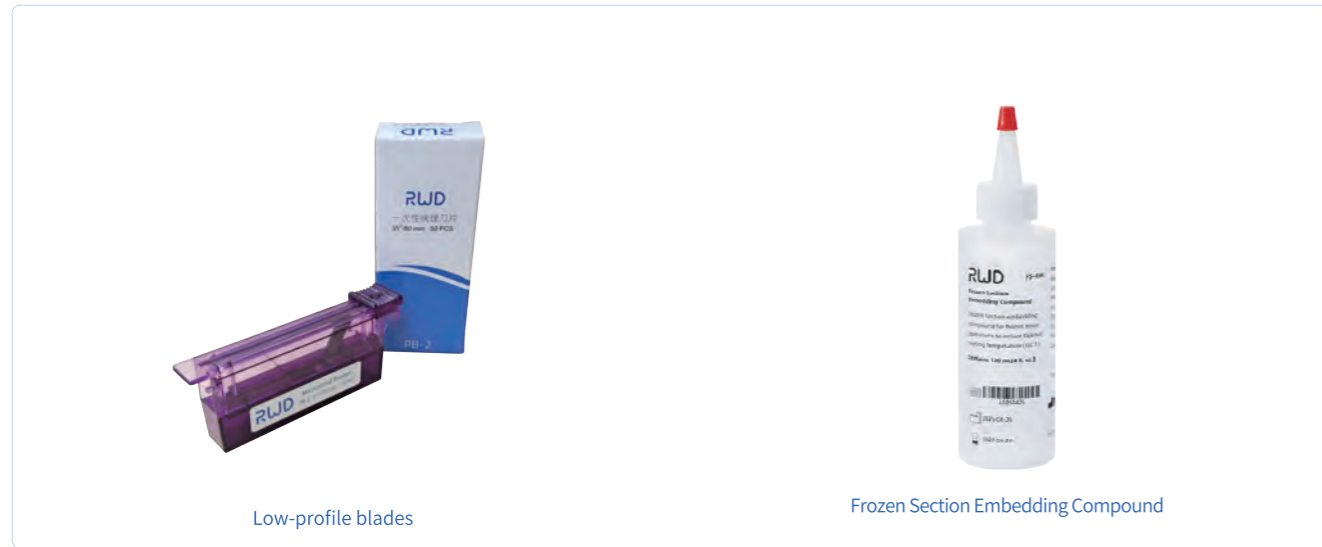
SP0011-B MCAO Surgical Instrument Kit for Rat & Mice

Cat. No.	Product Name	Size
F11027-13	Micro Forceps-Str,Tip 0.1*0.06mm, 13cm	1
S32003-12	Scalpel Handles with Ruler 3# Solid-12.5cm	1
F12006-10	IRIS Dissecting Forceps-Light Cvd, Tip width 1mm,10cm	1
S11001-08	VANNAS Spring Scissors (Triangular)-S/S Str/8cm	1
F13030-10	IRIS 1x2 Teeth Tissue Forceps-Light Cvd, Tip width 1.3mm, 10.5cm	1
F22002-10	HARTMAN Mosquito Forceps-Str/0.8mm/10.5cm	1
S12008-10	IRIS-Fine Scissors-S/S Cvd/10.5cm	1
F35204-70	NA Terylene Sutures w/Needle-△3/8 /7-0 (50/Box)	20
S14014-15	Operating Scissors (Round Type)-S/S Str/15.5cm	1
R21013-01	MANNERFELT Hooks, 1 Tooth, Blunt, 15.5cm	4
S12007-10	IRIS-Fine Scissors-S/S Str/10.5cm	1
F31047-14	OLSEN-HEGAR Needle Holders with Scissors-Str,1.7mm/14cm	1
S31015-01	15# Scalpel Blades (Box of 100pcs)	1
F12005-10	IRIS Dissecting Forceps-Str, Tip width 1mm,10cm	1
F13029-10	IRIS 1x2 Teeth Tissue Forceps-Str, Tip width 1.3mm, 10.5cm	1
F11028-13	Micro Forceps-Cvd,Tip 0.1*0.06mm, 13cm	1
R31005-06	SS Micro Clamps-Str/L*W 6*1mm/19mm	5
F11004-11	Micro Forceps-Cvd,Tip 0.2*0.12mm, 11cm	1
F11001-11	Micro Forceps-Str,Tip 0.2*0.12mm, 11cm	1
F22003-10	HARTMAN Mosquito Forceps-Cvd/1mm/10cm	1
R31006-04	SS Micro Clamps-Cvd/L*W 6*1mm/17mm	1
R34001-14	Clip Applicator for R31005- and R31006-14cm	1
SP0001-P	Instrument Storage Portfolio	1

SP0001-DR Surgical Instruments Kit DEMO(Research Version)

Cat. No.	Product Name	Size
S11001-08	VANNAS Spring Scissors (Triangular)-S/S Str/8cm	1
S11003-08	VANNAS Spring Scissors (Triangular)-S/S Angled/8.5cm	1
S12007-10	IRIS-Fine Scissors-S/S Str/10.5cm	1
S21019-14	Friedman-Pearson Rongeurs (SGL)-Str/0.5mm/14.5cm#	1
F11020-11	Micro Forceps-Str, Tip 0.05*0.01mm, 11cm	1
F11031-11	Micro Forceps (Titanium)-Cvd,Tip 0.07*0.03mm, 11cm	1
F11001-11	Micro Forceps-Str, Tip 0.2*0.12mm, 11cm	1
F13019-12	ADSON 1x2 Teeth Tissue Forceps, Tip width 1.8mm, 12cm	1
F18001-10	Cover Glass Forceps-Angled/Tip Size /10.5cm	1
F22003-10	HARTMAN Mosquito Forceps-Cvd/1mm/10cm	1
F31047-12	OLSEN-HEGAR Needle Holders with Scissors-Str, 1.5mm/12cm	1
R22009-01	ALM 4x4 Teeth Retractors-Blunt, 65mm Spread, 7.5cm	1
R31005-04	SS Micro Clamps-Str/L*W 4*0.75mm/16mm	1
R31005-06	SS Micro Clamps-Str/L*W 6*1mm/19mm	1
R34001-14	Clip Applicator for R31005- and R31006-Clamps/14cm	1
S13003-11	STEVENS Fine Dissecting Scissors (Flat Type)-B/B Str/11.5cm	1
FC12002T-08	Corneal Forceps(Titanium)-Arc, Head length 28mm, 0.3mm Tips, 6mm tying platform with φ0.2 hole, Three-hole handle, 8.5cm	1
C45000-C4	Hand Case for Surgical Instruments Kit DEMO(Research)	1

Histopathology Consumables



Low-profile blades

Frozen Section Embedding Compound

Cat. No.	Product Name	Amount
PB-2	Low-profile blades	50pcs
FS-EM	Frozen Section Embedding Compound	12 Bottles/Pkg

Rodent Brain & Heart Matrices

Constructed from high-grade stainless steel, our matrices are engineered for exceptional durability and long-term performance. The robust material allows for heating, cooling, and repeated autoclaving or scrubbing, ensuring a sterile and reliable tool for even the most demanding laboratory environments.

Brain Matrix-Mouse

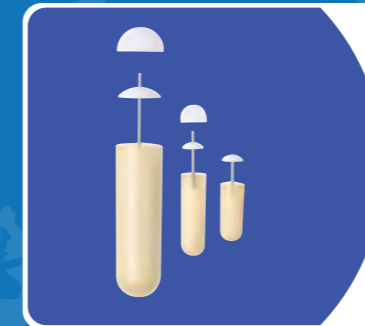
Cat. No.	Animal Type	Section Direction	Section Thickness	Material
68707	Mouse / Neonatal Rat / 20-75g	Coronal	1mm	Stainless steel
68708	Mouse / Neonatal Rat / 20-75g	Sagittal	1mm	Stainless steel
68713	Mouse / Neonatal Rat / 20-75g	Coronal	0.5mm	Stainless steel

Brain Matrix-Rat

Cat. No.	Animal Type	Section Direction	Section Thickness	Material
68709	Rat / 75-300g	Coronal	1mm	Stainless steel
68710	Rat / 75-300g	Sagittal	1mm	Stainless steel
68711	Rat / 300-600g	Coronal	1mm	Stainless steel

Heart Matrix

Cat. No.	Animal Type	Section Direction	Section Thickness	Material
68719	Mouse / Neonatal Rat / 20-75g	Coronal	1mm	Stainless steel
68720	Rat / 175-400g	Coronal	1mm	Stainless steel
68721	Mouse / Neonatal Rat / 20-75g	Coronal	0.5mm	Stainless steel
68722	Rat / 175-400g	Coronal	0.5mm	Stainless steel



Nanjing University

The Osmotic Pumps offers an ingenious drug delivery approach. The regulator design is excellent, providing a stable and consistent dosing rate.

Southern Medical University

We used this Osmotic Pumps in our intracranial aneurysm research. Its long delivery duration eliminates the need for repeated manual dosing, and the experimental results have been excellent.

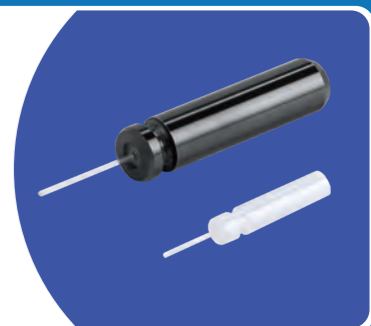
“ We have been using RWD the anesthetics Recycling Cans For a long time . The are resonably priced and does a good job on absorbing isoflurane after surgery ”



Princeton University

We previously used disposable plastic infusion cannulas until they were discontinued. Through a referral, I learned about the RWD brand. They offer a comprehensive product range and excel in customization. Even for large orders, the turnaround time is typically about one week. We will purchase again.

“ I got to test the samples you sent. They are very impressive. The auto fluorecence is comparable to the Thorlabs low auto-fluorecence fibers. The transmission efficiency is all >80%.Great! ”



Academy of Military Medical Sciences

We initially tried the product with a trial mindset, but achieved unexpectedly excellent results. Using the RWD Mouse CD4+ Cell Separation Kit (K1302-10) with the corresponding separation columns, we isolated T cells from mouse spleen with high purity at a reasonable cost. We look forward to the launch of a one-step isolation kit to further shorten processing time.

“ I used the surgical tools ordered from your company a couple of months ago and they are very good. I would like to order more. ”

